



28 518 710



- spray head Ø 55mm
- ball-joint pivotable through 25° (in any direction)
- rain flow
- anti-scale system
- rosette 78 x 55 mm
- 1/2" connection
- max. flow 5 l/min
- This product can help a building meet the requirements of Green Building Rating Systems, e.g. LEED®, BREEAM®, DGNB

	Brushed Platinum	28 518 710-06
	Chrome	28 518 710-00

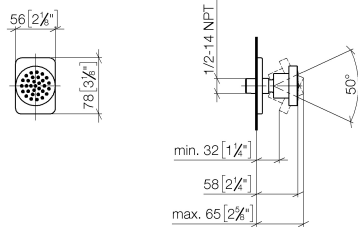
Recommended miscellaneous



- Concealed wall elbow -** 35 085 970 90
- max. recess depth 163 mm
 - min. recess depth 90 mm

28 518 710

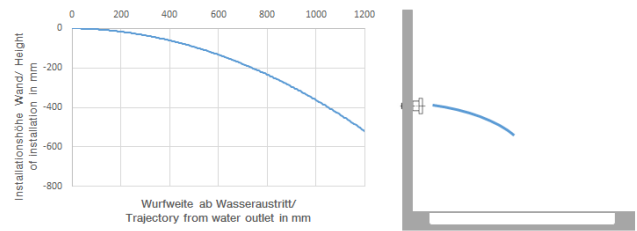
mm [inches]



Flow rate chart



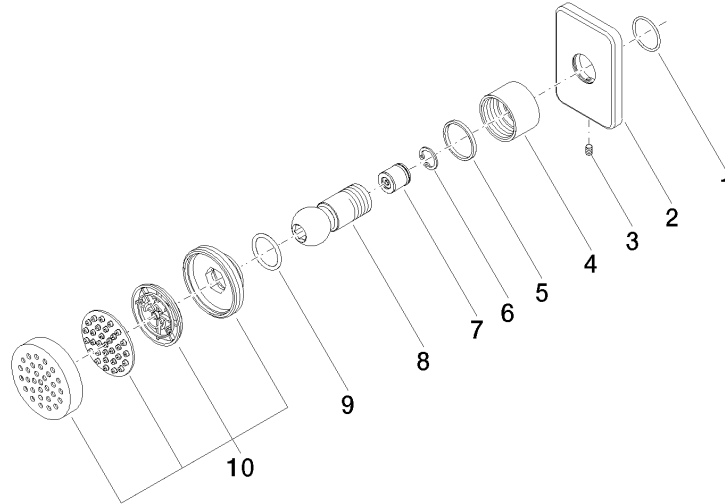
Trajectory diagram



Certificates

IAPMO_4976 (5). LGA_38651.

28 518 710



Spare parts list

No.	Item Number	Name	Quantity used	Delivery time
1	09 14 10 098 90	seal	1	2
2	09 27 71 004-06	rosette	1	10
3	09 31 11 048 90	pin	1	2
4	09 23 30 026-06	nut	1	10
5	09 14 15 010 90	ring	1	2
6	09 16 01 014 90	ring	1	2
7	09 23 01 048 90	back-flow preventer	1	2
8	09 21 40 016-06	connection	1	10
9	09 14 10 015 90	seal	1	2
10	90 12 05 027 00-06	casing (completely)	1	10