



28 518 979



- spray head Ø 55mm
- ball-joint pivotable through 25° (in any direction)
- HORIZONTAL RAIN, max. flow rate 5 l/min (at 3 bar)
- with anti-scale system
- rosette Ø 55 mm
- 1/2" connection
- This product can help a building meet the requirements of Green Building Rating Systems, e.g. LEED®, BREEAM®, DGNB

Fits: TARA, LISSÉ, VAIA, META

| | | |
|---|-------------------------------|---------------|
|  | Brushed Light Gold | 28 518 979-27 |
|  | Chrome | 28 518 979-00 |
|  | Brushed Platinum | 28 518 979-06 |
|  | Platinum | 28 518 979-08 |
|  | Durabrand (23kt Gold) | 28 518 979-09 |
|  | Dark Chrome | 28 518 979-19 |
|  | Light Gold | 28 518 979-26 |
|  | Brushed Durabrand (23kt Gold) | 28 518 979-28 |
|  | Matte Black | 28 518 979-33 |
|  | Brushed Bronze | 28 518 979-42 |
|  | Brushed Champagne (22kt Gold) | 28 518 979-46 |
|  | Champagne (22kt Gold) | 28 518 979-47 |
|  | Brushed Chrome | 28 518 979-93 |
|  | Brushed Dark Platinum | 28 518 979-99 |

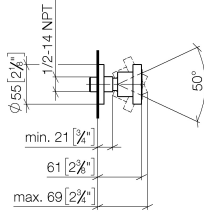
Recommended miscellaneous



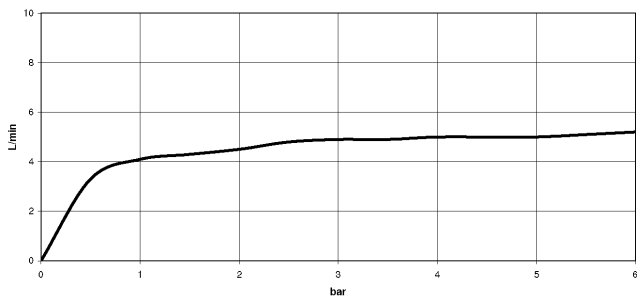
- Concealed wall elbow -** 35 085 970 90
- min. recess depth 90 mm
 - max. recess depth 163 mm

28 518 979

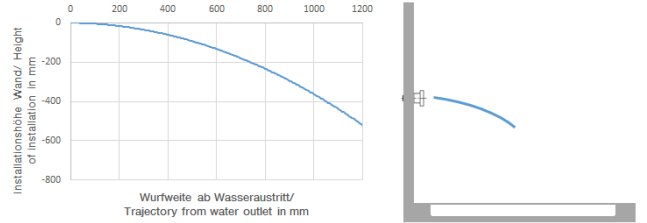
mm [inches]



Flow rate chart



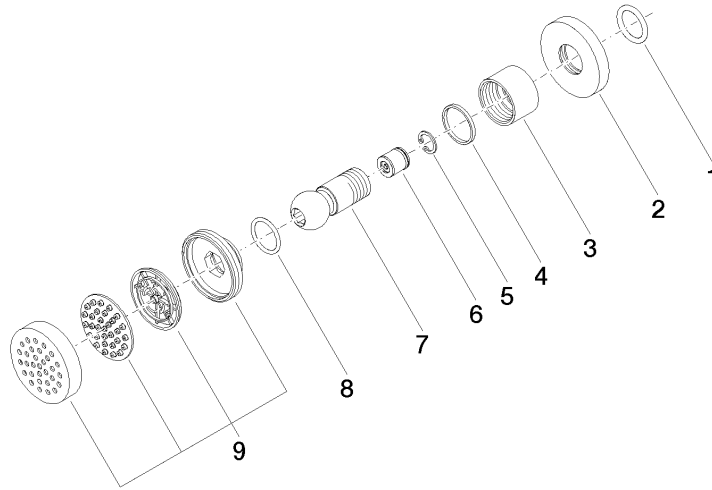
Trajectory diagram



Certificates

LGA_38651.

28 518 979



Spare parts list

| No. | Item Number | Name | Quantity used | Delivery time |
|-----|--------------------|-----------------------|---------------|---------------|
| 1 | 90 14 10 026 00 90 | seal | 1 | 2 |
| 2 | 09 27 22 019-27 | rosette | 1 | 60 |
| 3 | 09 23 30 026-27 | nut | 1 | 60 |
| 4 | 09 14 15 010 90 | ring | 1 | 2 |
| 5 | 09 16 01 014 90 | ring | 1 | 2 |
| 6 | 09 23 01 048 90 | back-flow preventer | 1 | 2 |
| 7 | 09 21 40 016-27 | connection | 1 | 60 |
| 8 | 09 14 10 015 90 | seal | 1 | 2 |
| 9 | 90 12 05 027 00-27 | casing (completely) | 1 | 30 |