

Two-way diverter - Chrome

SERIES SPECIFIC

29 126 740

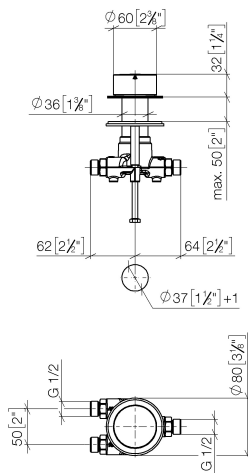


- rotary diverter
- hole diameter 37 mm
- without rosette
- handle Ø 60mm
- 1/2" connection
- max. flow 23.5 l/min at 3 bar flow pressure

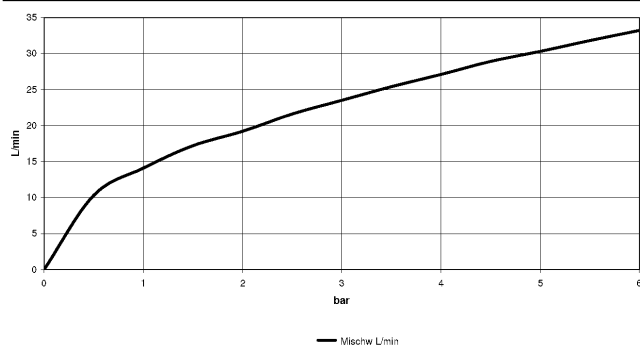
Not suitable for combining with Perfecto (12 614 970 90).

29 126 740

mm [inches]



Flow rate chart



Codes & Standards

ASME A112.18.1

cUPC

DIN 4109

ISO 3822

Ü-Zeichen



Two-way diverter - Chrome

SERIES SPECIFIC

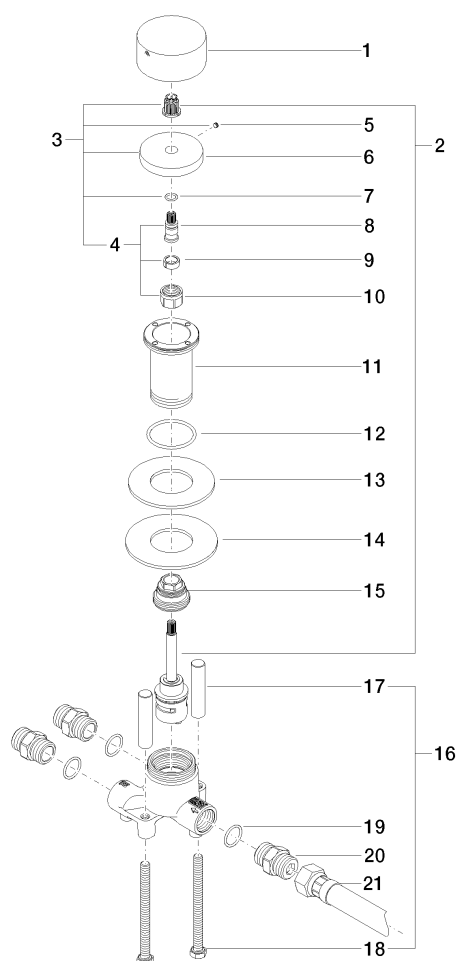
29 126 740

Certificates and sustainability

LGA_18

IAPMO_4976

29 126 740



Spare parts list

No.	Item Number	Name	Quantity used	Delivery time
	13 09 14 05 059 90	seal	1.00	2
	4 04 29 06 020 00-00	spindle	1.00	10
	5 09 31 11 055 90	pin	1.00	2
	2 90 90 03 161 00 90	diverter	1.00	2
	21 12 503 970 90	High pressure hose 1/2" x 1/2" x 600 mm -	1.00	2
	8 09 29 06 020-00	spindle	1.00	10
	17 09 18 40 114 90	sleeve	2.00	2
	16 04 30 30 153 00 90	fixing set	1.00	2
	11 09 30 01 105 90	sleeve	1.00	2
	18 09 30 30 153 90	screw	2.00	2
	3 04 27 74 002 00-00	rosette	1.00	10
	12 09 14 10 143 90	seal	1.00	2
	14 09 30 11 136 90	disc	1.00	2
	1 09 20 74 007-00	handle	1.00	10
	15 09 24 04 223 90	nipple	1.00	2
	6 09 27 74 002-00	rosette	1.00	10
	10 90 23 30 023 00 90	nut	1.00	2
	7 90 14 10 060 00 90	seal	1.00	2
	9 90 14 15 020 03 90	ring	1.00	2
	19 90 14 10 010 00 90	seal	3.00	2
	20 90 24 03 168 00 90	nipple	3.00	2