

MADISON Two-way diverter for bath rim or tile edge installation - Durabrass (23kt Gold)

MADISON

29 140 360 Product version from 6/30/2015

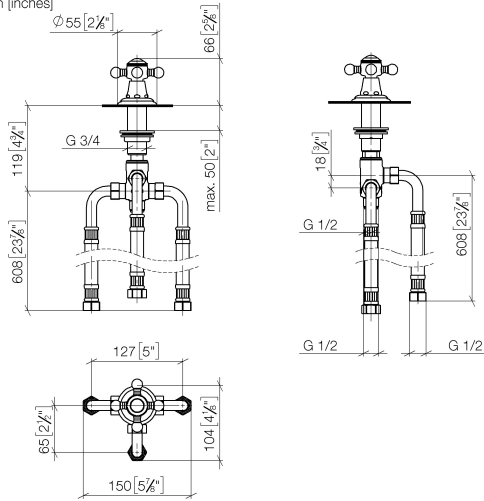


- automatic bath/shower diverter
- hole diameter 32 mm
- rosette Ø 55 mm
- 1/2" connection
- max. flow 64.9 l/min at 3 bar flow pressure

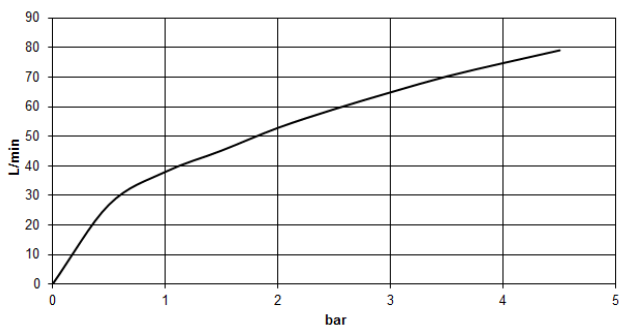
MADISON Two-way diverter for bath rim or tile edge installation - Durabrass (23kt Gold)

MADISON

29 140 360 Product version from 6/30/2015
mm [inches]



Flow rate chart



Codes & Standards

| | | | |
|----------------|------|----------|----------|
| ASME A112.18.1 | cUPC | DIN 4109 | ISO 3822 |
|----------------|------|----------|----------|

Ü-Zeichen



MADISON Two-way diverter for bath rim or tile edge installation - Durabrass (23kt Gold)

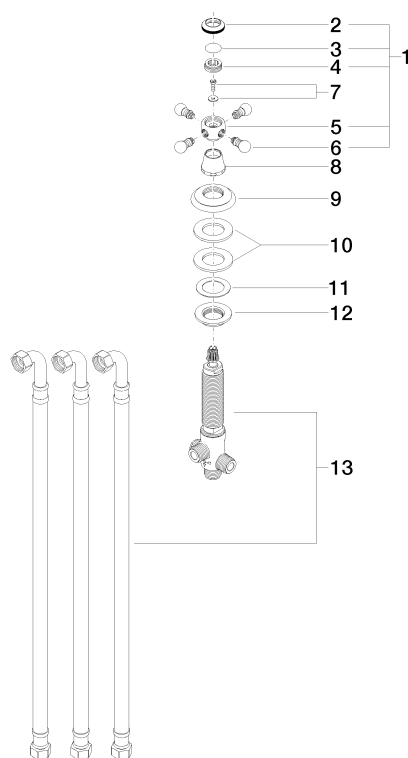
MADISON

29 140 360 Product version from 6/30/2015

Certificates and sustainability

LGA_29

IAPMO_4976



Spare parts list

| No. | Item Number | Name | Quantity used | Delivery time |
|-----|--------------------|-------------|---------------|---------------|
| 6 | 09 20 36 004-09 | handle | 4.00 | 40 |
| 8 | 09 21 02 055-09 | cover | 1.00 | 40 |
| 13 | 90 17 09 051 00 90 | diverter | 1.00 | 2 |
| 9 | 09 27 35 001-09 | rosette | 1.00 | 40 |
| 11 | 09 14 40 002 90 | seal | 1.00 | 2 |
| 10 | 09 14 05 014 90 | seal | 1.00 | 2 |
| 4 | 09 20 83 006 90 | handle | 1.00 | 2 |
| 2 | 09 20 36 005-09 | handle | 1.00 | 40 |
| 1 | 04 20 36 002 08-09 | handle | 1.00 | 40 |
| 3 | 09 26 01 016 90 | accessories | 1.00 | 2 |
| 12 | 09 23 10 004 90 | nut | 1.00 | 2 |
| 7 | 04 30 30 029 00 90 | fixing set | 1.00 | 2 |
| 5 | 09 20 36 002-09 | handle | 1.00 | 40 |