








MEM Single-lever basin mixer - Brushed Platinum

MEM

29 210 782 Product version from 3/10/2014 to 3/18/2019



- hole diameter 35 mm
- rosette 60 x 60 mm
- 3x screw-in M 10 x 1 pressure hose, leak-tested

| | | |
|---|--------------------------------|---------------|
|  | Brushed Platinum | 29 210 782-06 |
|  | Platinum | 29 210 782-08 |
|  | Dark Chrome | 29 210 782-19 |
|  | Brushed Durabronze (23kt Gold) | 29 210 782-28 |
|  | Brushed Champagne (22kt Gold) | 29 210 782-46 |
|  | Champagne (22kt Gold) | 29 210 782-47 |
|  | Brushed Dark Platinum | 29 210 782-99 |

MEM Single-lever basin mixer - Brushed Platinum

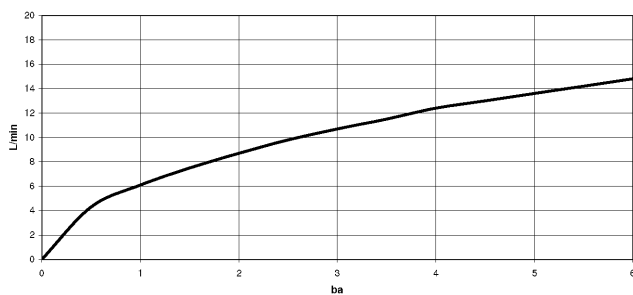
MEM

29 210 782 Product version from 3/10/2014 to 3/18/2019

mm [inches]



Flow rate chart



Codes & Standards

DIN 4109

Executive Order
no. 1007

ISO 3822

Ü-Zeichen



MEM Single-lever basin mixer - Brushed Platinum

MEM

29 210 782 Product version from 3/10/2014 to 3/18/2019

Certificates and sustainability

LGA_28

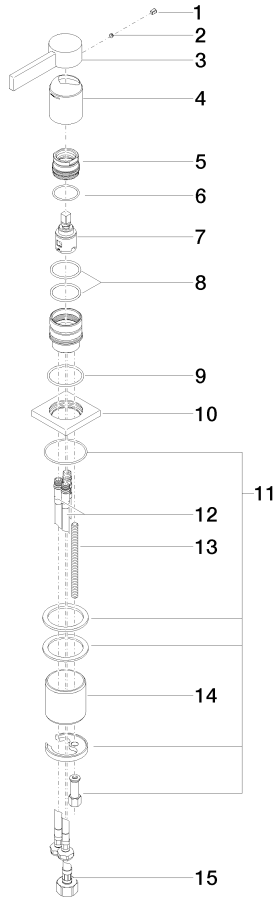
GDV_0400

MEM Single-lever basin mixer - Brushed Platinum

MEM

29 210 782 Product version from 3/10/2014 to 3/18/2019

Parts for other
finishes can be found
here: [Platinum](#)



Spare parts list

| No. | Item Number | Name | Quantity used | Delivery time |
|-----|-----------------------|------------|---------------|---------------|
| | 15 04 30 04 019 00 90 | hose | 1.00 | 2 |
| | 9 09 14 10 067 90 | seal | 1.00 | 2 |
| | 7 90 15 05 042 00 90 | cartridge | 1.00 | 2 |
| | 5 09 24 04 288 90 | nut | 1.00 | 2 |
| | 8 09 14 10 192 90 | seal | 2.00 | 2 |
| | 14 09 18 40 079 90 | sleeve | 1.00 | 2 |
| | 12 04 30 04 104 00 90 | hose | 2.00 | 2 |
| | 6 09 14 10 137 90 | seal | 1.00 | 2 |
| | 4 09 11 02 289-06 | cover | 1.00 | 10 |
| | 3 09 20 78 057-06 | handle | 1.00 | 10 |
| | 11 04 30 11 038 02 90 | fixing set | 1.00 | 2 |
| | 10 09 27 78 040-06 | rosette | 1.00 | 10 |
| | 13 09 31 11 012 90 | pin | 1.00 | 2 |
| | 1 90 31 20 109 00 90 | plug | 1.00 | 2 |
| | 2 90 31 11 063 00 90 | pin | 1.00 | 2 |