

LISSE

Single-lever bidet mixer with pop-up waste - Brushed Platinum







LISSE

33 600 845

Product version from 3/9/2016 to 10/31/2018



- 123mm projection
- ball-joint pivotable through 30°
- rectangular, air-enriched flow
- height of mixer 127 mm
- height up to aerator 83 mm
- hole diameter 35 mm
- 2x screw-in M 8 x 1 pressure hose, leak-tested
- max. flow 6 l/min
- WRAS

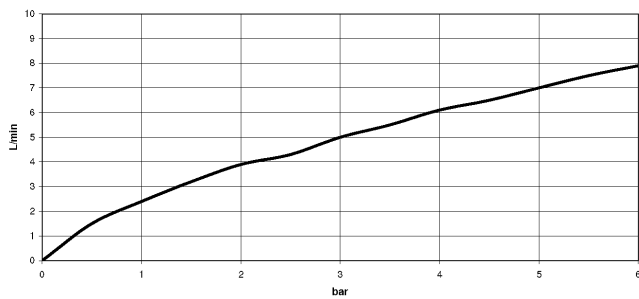
|   |                       |               |
|---|-----------------------|---------------|
|  | Brushed Platinum      | 33 600 845-06 |
|  | Chrome                | 33 600 845-00 |
|  | Dark Chrome           | 33 600 845-19 |
|  | Brushed Light Gold    | 33 600 845-27 |
|  | Brushed Chrome        | 33 600 845-93 |
|  | Brushed Dark Platinum | 33 600 845-99 |

33 600 845 Product version from 3/9/2016 to 10/31/2018

mm [inches]



### Flow rate chart



### Codes & Standards

DIN 4109

ISO 3822

Scottish Water  
Byelaws

UK Water Supply  
Regulations

Ü-Zeichen



## LISSE Single-lever bidet mixer with pop-up waste - Brushed Platinum

LISSE

33 600 845 Product version from 3/9/2016 to 10/31/2018

### Certificates and sustainability

LGA\_29

WRAS\_1804

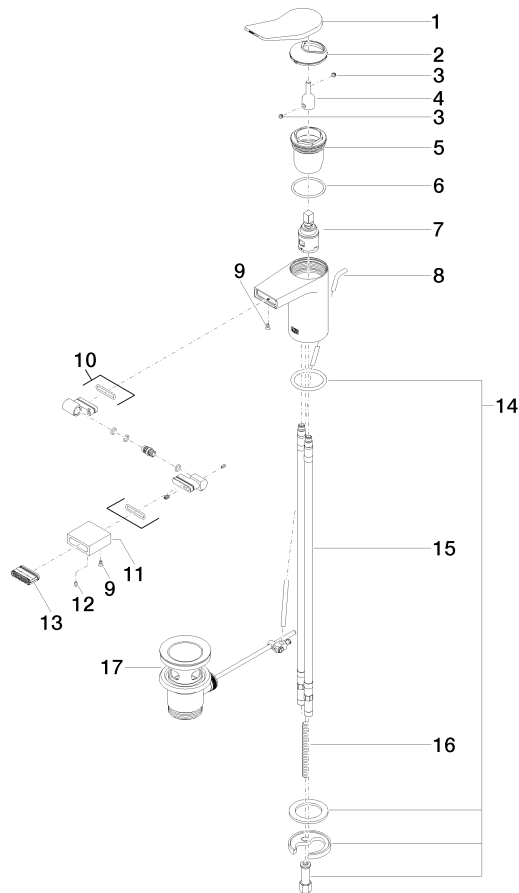
WRAS\_240202

## LISSE Single-lever bidet mixer with pop-up waste - Brushed Platinum

LISSE

33 600 845 Product version from 3/9/2016 to 10/31/2018

Parts for other  
finishes can be found  
here: [Chrome](#)



### Spare parts list

| No. | Item Number        | Name         | Quantity used | Delivery time |
|-----|--------------------|--------------|---------------|---------------|
| 11  | 09 23 01 123-06    | sleeve       | 1.00          | 10            |
| 7   | 90 15 05 042 00 90 | cartridge    | 1.00          | 2             |
| 14  | 04 30 11 038 75 90 | fixing set   | 1.00          | 2             |
| 9   | 09 30 30 157 90    | screw        | 2.00          | 2             |
| 15  | 04 30 04 018 00 90 | hose         | 2.00          | 60            |
| 6   | 09 14 10 038 90    | seal         | 1.00          | 2             |
| 16  | 09 31 11 011 90    | pin          | 1.00          | 2             |
| 5   | 09 23 10 123 90    | nut          | 1.00          | 2             |
| 12  | 09 31 11 064 90    | pin          | 1.00          | 2             |
| 1   | 90 20 84 020 00-06 | handle       | 1.00          | 10            |
| 10  | 90 24 02 083 00-06 | joint        | 1.00          | 10            |
| 13  | 90 29 03 045 00 90 | aerator      | 1.00          | 2             |
| 4   | 09 29 06 117-07    | extension    | 1.00          | 30            |
| 8   | 09 31 09 120-06    | pull-rod     | 1.00          | 10            |
| 2   | 09 28 30 034 90    | cover        | 1.00          | 2             |
| 3   | 90 31 11 063 00 90 | pin          | 2.00          | 2             |
| 17  | 90 11 01 001 00-06 | pop-up waste | 1.00          | 10            |