


ELIO Single-lever mixer - Brushed Platinum
ELIO

33 800 790
Product version from 5/31/2010 to 5/15/2020




- 234mm projection
- pivotable spout 360°
- spout, end-piece with 20° rotation
- air-enriched flow
- height of mixer 337 mm
- height up to aerator 297 mm
- hole diameter 35 mm
- max. flow 8 l/min at 3 bar flow pressure
- lead-free
- This product can help a building meet the requirements of Green Building Rating Systems, e.g. LEED®, BREEAM®, DGNB
- WRAS

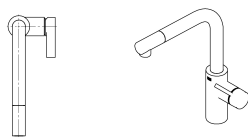
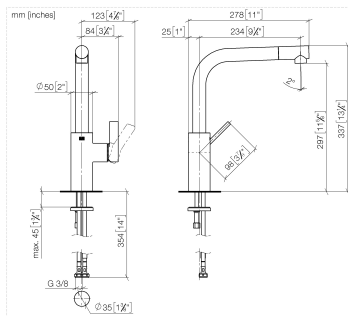
Recommended miscellaneous

	Dispenser without rosette -	
	Brushed Platinum	82 424 970-06

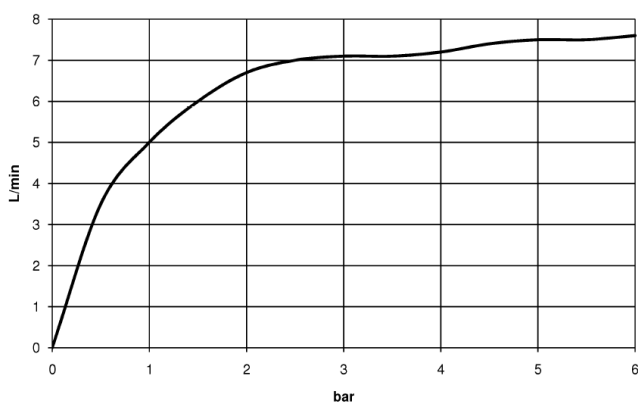
Recommended miscellaneous

	Strainer waste with control handle	
	- Brushed Platinum	10 712 970-06

33 800 790 Product version from 5/31/2010 to 5/15/2020



Flow rate chart



Codes & Standards

DIN 4109

EN 817

Executive Order
no. 1007

ISO 3822

Scottish Water
Byelaws

UK Water Supply
Regulations

Ü-Zeichen

VA-Zeichen



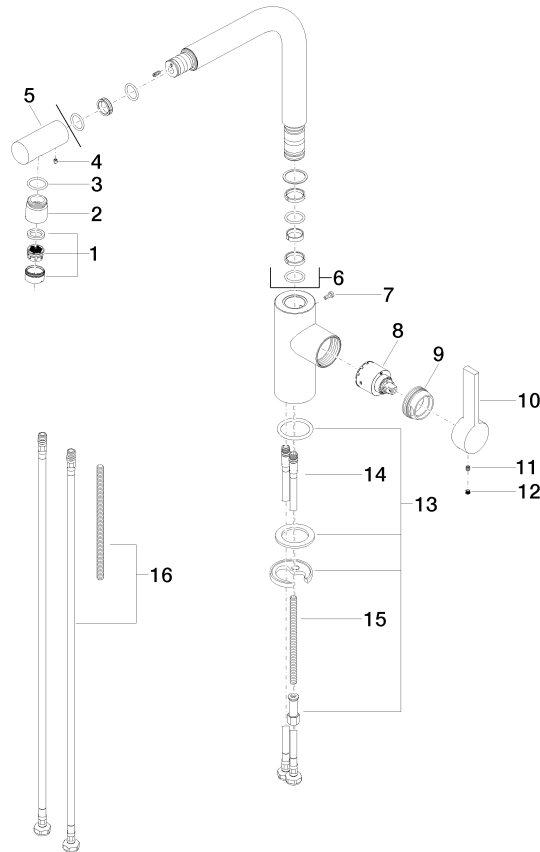
ELIO Single-lever mixer - Brushed Platinum

ELIO

33 800 790 Product version from 5/31/2010 to 5/15/2020

Certificates and sustainability

WRAS_2101	GDV_0400	LGA_18	ETA_18
-----------	----------	--------	--------



Spare parts list

No.	Item Number	Name	Quantity used	Delivery time
6	90 28 22 185 00-06	spout	1.00	10
10	09 20 79 040-06	handle	1.00	10
14	04 30 04 104 00 90	hose	2.00	2
13	04 30 11 038 75 90	fixing set	1.00	2
1	90 23 01 026 07-06	aerator	1.00	10
7	09 30 30 054 90	screw	1.00	2
16	12 803 970 90	extension	1.00	60
9	09 24 04 141-06	nut	1.00	10
3	09 14 10 100 90	seal	1.00	2
5	09 24 04 163 10-06	nipple	1.00	10
2	09 24 04 164 10-06	nipple	1.00	10
4	09 31 11 044 90	pin	1.00	2
15	09 31 11 091 90	pin	1.00	2
11	90 31 11 030 00 90	pin	1.00	2
12	90 31 20 109 00 90	plug	1.00	2
8	90 15 05 045 00 90	cartridge	1.00	2