

## MEM BAR TAP Single-lever mixer - Brushed Chrome

MEM

33 805 682 Product version from 3/1/2023



- 166mm projection
- pivotable spout 360°
- Optional swivel limiter available with swivel limiter set 12 820 970 90
- air-enriched flow
- max. flow 6.3 l/min at 3 bar flow pressure
- lead-free
- This product can help a building meet the requirements of Green Building Rating Systems, e.g. LEED®, BREEAM®, DGNB
- WRAS

	Brushed Chrome	33 805 682-93
	Chrome	33 805 682-00
	Brushed Platinum	33 805 682-06
	Platinum	33 805 682-08
	Durabrass (23kt Gold)	33 805 682-09
	Dark Chrome	33 805 682-19
	Brushed Durabrass (23kt Gold)	33 805 682-28
	Matte Black	33 805 682-33
	Brushed Bronze	33 805 682-42
	Brushed Champagne (22kt Gold)	33 805 682-46
	Champagne (22kt Gold)	33 805 682-47
	Brushed Dark Platinum	33 805 682-99

### Recommended miscellaneous

**Swivel limitation set -** 12 820 970 90



### Recommended miscellaneous

**Strainer waste with control handle - Brushed Chrome** 10 712 970-93



### Recommended miscellaneous

**Dispenser without rosette - Brushed Chrome** 82 424 970-93

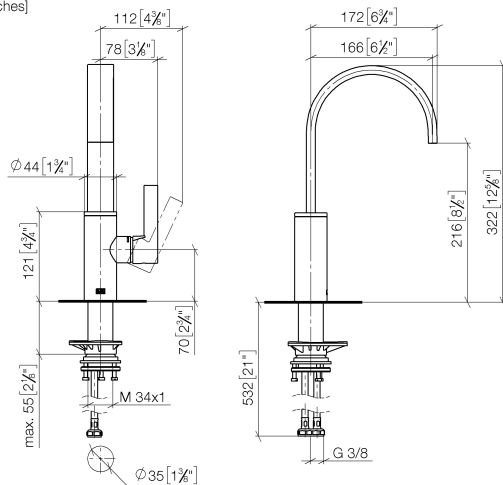


## MEM BAR TAP Single-lever mixer - Brushed Chrome

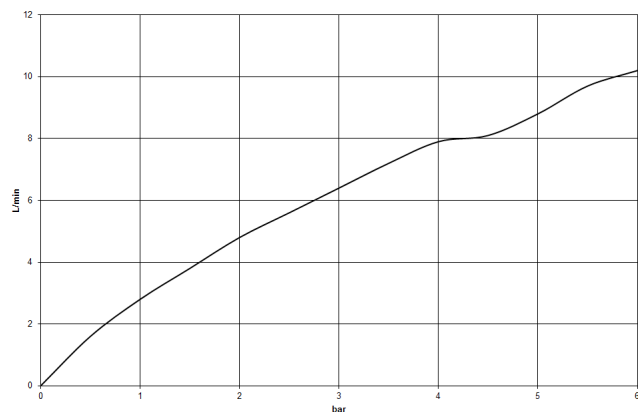
MEM

33 805 682 Product version from 3/1/2023

mm [inches]



### Flow rate chart



### Codes & Standards

DIN 4109

ISO 3822

Scottish Water  
Byelaws

UK Water Supply  
Regulations

Ü-Zeichen



## MEM BAR TAP Single-lever mixer - Brushed Chrome

---

MEM

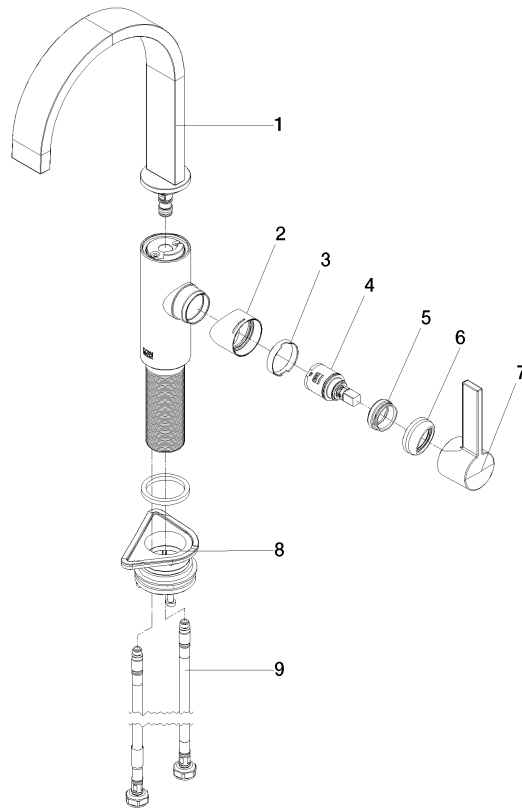
33 805 682 Product version from 3/1/2023

Certificates and sustainability

---

LGA\_38

WRAS\_240202



## Spare parts list

No.	Item Number	Name	Quantity used	Delivery time
9	04 30 04 101 00 90	hose	2.00	2
2	09 19 86 012-93	cover	1.00	60
4	90 15 05 042 00 90	cartridge	1.00	2
6	90 28 30 052 00-93	cover	1.00	20
7	90 20 86 004 00-93	handle	1.00	20
5	09 24 04 266 90	nut	1.00	2
1	90 28 22 282 00-93	spout	1.00	20
8	04 23 10 044 08 90	fixing set	1.00	2
3	90 23 10 128 00 90	nut	1.00	2