

VAIA Single-lever mixer for rinsing/Profi spray - Brushed Champagne (22kt Gold)

VAIA


33 810 809    Product version from 7/1/2023



- 202mm projection
  - pivotable spout 360°
  - air-enriched flow
  - max. flow 7 l/min at 3 bar flow pressure
  - lead-free
  - This product can help a building meet the requirements of Green Building Rating Systems, e.g. LEED®, BREEAM®, DGNB
  - WRAS
- Single-lever mixer for combining with rinsing/Profi spray only

	Brushed Champagne (22kt Gold)	33 810 809-46
	Chrome	33 810 809-00
	Brushed Platinum	33 810 809-06
	Platinum	33 810 809-08
	Durabrass (23kt Gold)	33 810 809-09
	Dark Chrome	33 810 809-19
	Brushed Durabrass (23kt Gold)	33 810 809-28
	Matte Black	33 810 809-33
	Brushed Bronze	33 810 809-42
	Champagne (22kt Gold)	33 810 809-47
	Brushed Chrome	33 810 809-93
	Brushed Dark Platinum	33 810 809-99

Recommended miscellaneous



**VAIA Dispenser with rosette - Brushed Champagne (22kt Gold)**

82 434 809-46

Recommended miscellaneous



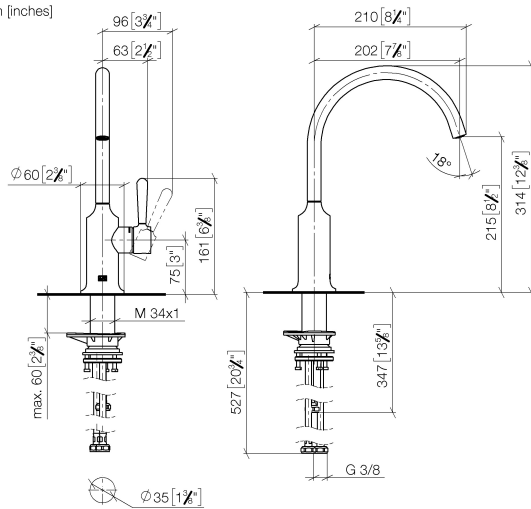
**VAIA Rinsing spray set - Brushed Champagne (22kt Gold)**

27 718 809-46

# VAIA Single-lever mixer for rinsing/Profi spray - Brushed Champagne (22kt Gold)

VAIA

33 810 809 Product version from 7/1/2023  
mm [inches]



Flow rate chart



## Codes & Standards

DIN 4109

ISO 3822

Scottish Water  
Byelaws

UK Water Supply  
Regulations

Ü-Zeichen



VAIA Single-lever mixer for rinsing/Profi spray - Brushed Champagne (22kt Gold)

VAIA

---

33 810 809    Product version from 7/1/2023

Certificates and sustainability

---

LGA\_38

WRAS\_240602

## VAIA Single-lever mixer for rinsing/Profi spray - Brushed Champagne (22kt Gold)

VAIA

33 810 809 Product version from 7/1/2023

Parts for other  
finishes can be found  
here: [Chrome](#)



### Spare parts list

No.	Item Number	Name	Quantity used	Delivery time
8	04 30 04 101 00 90	hose	2.00	2
2	90 15 05 042 00 90	cartridge	1.00	2
9	04 23 10 044 08 90	fixing set	1.00	2
7	04 30 04 100 00 90	hose	1.00	2
3	09 24 04 266 90	nut	1.00	2
6	90 20 80 050 00-46	handle	1.00	30
4	09 14 10 091 90	seal	1.00	2
5	90 28 30 052 00-46	cover	1.00	30
1	90 28 22 313 02-46	spout	1.00	30