

VAIA Single-lever mixer for rinsing/Profi spray - Brushed Chrome

VAIA

33 810 809 Product version from 7/1/2023



- 202mm projection
- pivotable spout 360°
- air-enriched flow
- max. flow 7 l/min at 3 bar flow pressure
- lead-free
- This product can help a building meet the requirements of Green Building Rating Systems, e.g. LEED®, BREEAM®, DGNB
- WRAS

Single-lever mixer for combining with rinsing/Profi spray only

	Brushed Chrome	33 810 809-93
	Chrome	33 810 809-00
	Brushed Platinum	33 810 809-06
	Platinum	33 810 809-08
	Durabrass (23kt Gold)	33 810 809-09
	Dark Chrome	33 810 809-19
	Brushed Durabrass (23kt Gold)	33 810 809-28
	Matte Black	33 810 809-33
	Brushed Bronze	33 810 809-42
	Brushed Champagne (22kt Gold)	33 810 809-46
	Champagne (22kt Gold)	33 810 809-47
	Brushed Dark Platinum	33 810 809-99

Recommended miscellaneous

**VAIA Dispenser with rosette -
Brushed Chrome**

82 434 809-93



Recommended miscellaneous

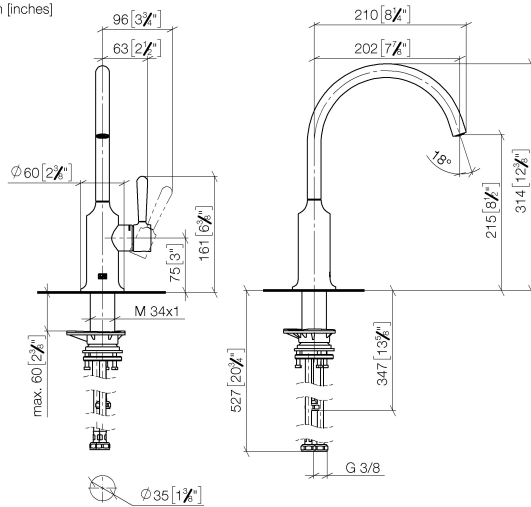
**VAIA Rinsing spray set - Brushed
Chrome**

27 718 809-93



33 810 809 Product version from 7/1/2023

mm [inches]



Flow rate chart



Codes & Standards

DIN 4109

ISO 3822

Scottish Water
Byelaws

UK Water Supply
Regulations

Ü-Zeichen



VAIA Single-lever mixer for rinsing/Profi spray - Brushed Chrome

VAIA

33 810 809 Product version from 7/1/2023

Certificates and sustainability

LGA_38

WRAS_240602

33 810 809 Product version from 7/1/2023

Parts for other
finishes can be found
here: [Chrome](#)



Spare parts list

No.	Item Number	Name	Quantity used	Delivery time
	9 04 23 10 044 08 90	fixing set	1.00	2
	3 09 24 04 266 90	nut	1.00	2
	7 04 30 04 100 00 90	hose	1.00	2
	2 90 15 05 042 00 90	cartridge	1.00	2
	6 90 20 80 050 00-93	handle	1.00	20
	5 90 28 30 052 00-93	cover	1.00	20
	4 09 14 10 091 90	seal	1.00	2
	1 90 28 22 313 02-93	spout	1.00	20
	8 04 30 04 101 00 90	hose	2.00	2