

Concealed wall mounting -

SERIES-VARIOUS

35 003 970 90

Product version up to 10/2/2019



- red brass, lead-free
- 2x female thread 1/2" connections
- dust cover
- anti-water packing
- soundproofing
- WRAS

Can only be combined with exposed trim parts 26

024 661-FF / 36 013 660-FF / 36 045 660-FF / 36

013 970-FF / 36 045 970-FF / 36 804 661-FF.

Recommended miscellaneous



Extension 25 mm -

12 179 970 90

•Can only be combined with

exposed trim parts 36 804 661-FF.

Recommended miscellaneous



Leak protection 1/2" -

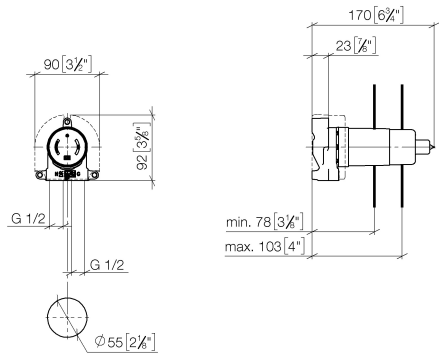
12 010 970 90

•This article is needed 2x.

35 003 970 90

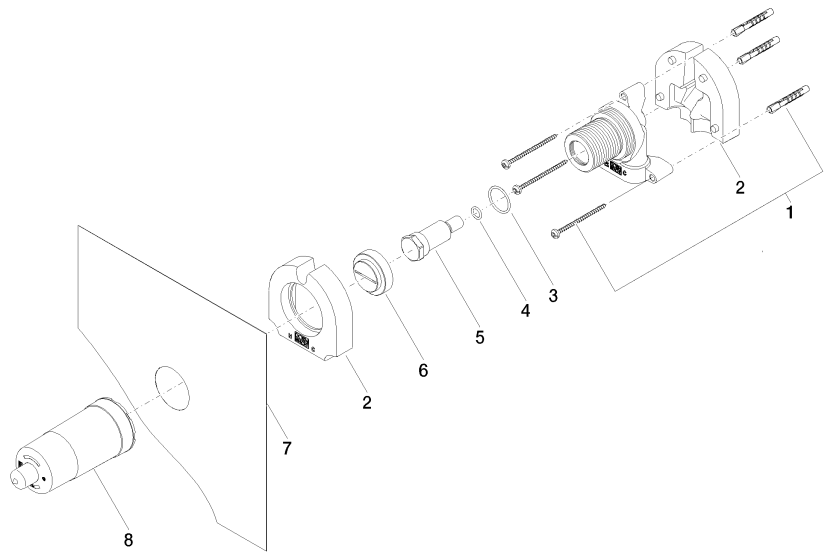
Product version up to 10/2/2019

mm [inches]



Codes & Standards			
DIN 4109	EN 817	ISO 3822	Scottish Water Byelaws
UK Water Supply Regulations	Ü-Zeichen		

Certificates and sustainability			
DVGW_DW-6512DN0	LGA_18	WRAS_2003	WRAS_2101



Spare parts list

No.	Item Number	Name	Quantity used	Delivery time
7	04 14 03 079 00 90	gasket kit	1.00	2
1	05 30 31 029 00 90	fixing set	1.00	2
3	09 14 10 112 90	seal	1.00	2
4	09 14 10 139 90	seal	1.00	2
5	09 31 20 038 90	plug	1.00	2
8	09 21 02 178 90	cap	1.00	2
2	09 11 11 019 90	accessories	2.00	2
6	09 20 97 010 90	cap	1.00	2