






xTOOL Concealed thermostat module with 2 valves -

SERIES-VARIOUS

35 524 970 90



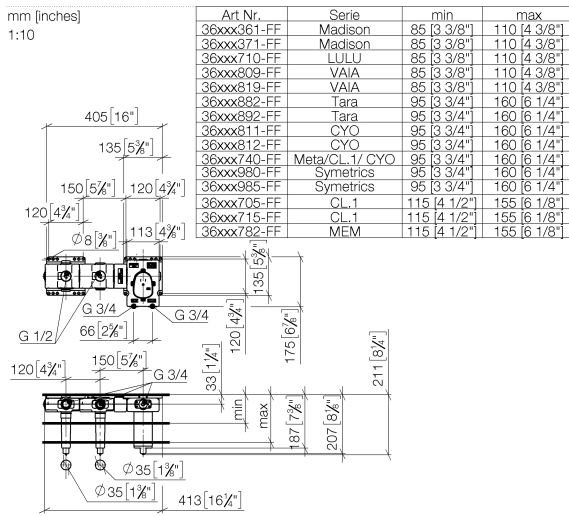
- red brass, lead-free
- 2x back flow preventer
- 2x female thread 3/4" connections
- 1x female thread 3/4" outlet for additional valves
- 2x female thread 3/4" outlet
- 4x dust cover
- 4x anti-water packing
- soundproofing
- gauge 120 mm
- suitable for xGRID (when using installation track + 12 mm recess depth)
- WRAS

Recommended miscellaneous		Recommended miscellaneous	
<div> <div>Extension 28 mm -</div> <div>12 177 970 90</div>  </div>		<div> <div>Extension 46 mm -</div> <div>12 178 970 90</div>  </div>	
<div> <div>Recommended miscellaneous</div> <div> <div>xGRID Attachment set for integrating in the dry wall construction -</div> <div>12 340 970 90</div>  </div> </div>		<div> <div>Recommended miscellaneous</div> <div> <div>Leak protection 3/4" -</div> <div>12 012 970 90</div> <div>•This article is needed 2x.</div>  </div> </div>	
<div> <div>Required miscellaneous</div> <div> <div>xGRID Installation track 555 mm -</div> <div>12 360 970 90</div>  </div> </div>			

xTOOL Concealed thermostat module with 2 valves -

SERIES-VARIOUS

35 524 970 90



Codes & Standards

EN 1111

EN 1717

Scottish Water
Byelaws

UK Water Supply
Regulations

XP P 41-280

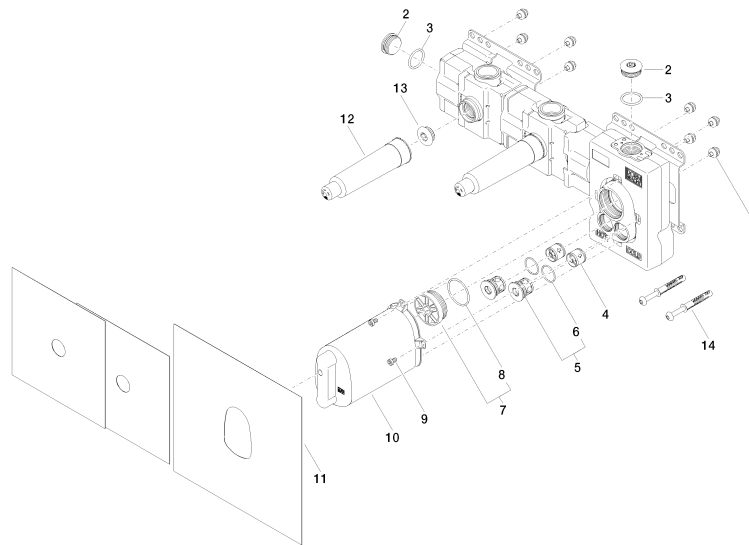
Certificates and sustainability

Belgaqua_21-031-2 WRAS_2011

ACS_21 ACC LY

DVGW_DW-
6512DN0

35 524 970 90



Spare parts list

No.	Item Number	Name	Quantity used	Delivery time
14	04 30 31 054 00 90	fixing set	2.00	2
8	09 14 10 111 90	seal	1.00	2
6	09 14 10 098 90	seal	2.00	2
4	90 23 01 045 00 90	back-flow preventer	2.00	2
9	09 30 30 112 90	screw	4.00	2
2	09 31 20 003 90	plug	4.00	2
13	04 31 20 006 00 90	plug	2.00	2
3	09 14 10 009 90	seal	4.00	2
7	04 31 20 100 00 90	plug	1.00	2
5	04 21 34 077 00 90	nipple	2.00	2
1	90 23 01 091 00 90	set	8.00	2
12	09 21 02 173 90	cap	2.00	2
11	04 14 03 073 06 90	gasket kit	1.00	2
10	04 21 02 174 01 90	cap	1.00	2