

Concealed wall-mounted single-lever mixer mixer on right -

SERIES-VARIOUS

35 816 970 90 Product version from 3/16/2015



- 2x female thread 1/2" connections
- 2x 1/2" x 1000mm high pressure hose
- 1x female thread 1/2" outlet for wall spout
- cartridge
- gauge 100 mm
- lead-free

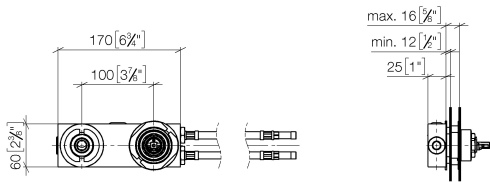
Recommended combination for this fitting:Rear walls with- wall thickness: 12-16 mm- spout hole diameter: 40 mm- mixer hole diameter: 58 mm- clear width behind wall: 25 mm

NOTE:Not suitable for concealed installation.Connection by means of angle valves, mounted with screws to back wall.

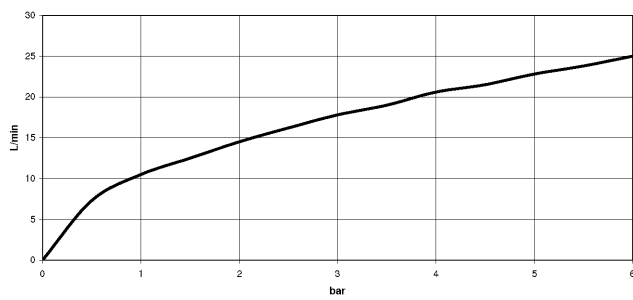
Concealed wall-mounted single-lever mixer mixer on right - **SERIES-VARIOUS**

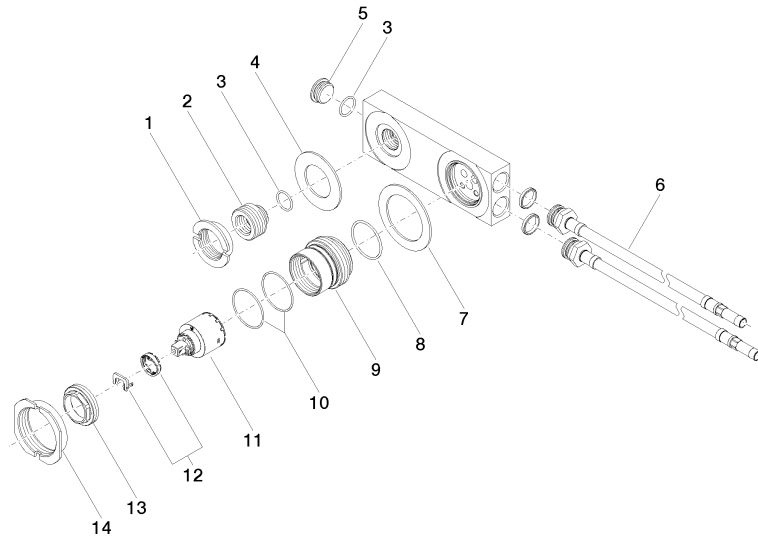
35 816 970 90 Product version from 3/16/2015

mm [inches]



Flow rate chart





Spare parts list

No.	Item Number	Name	Quantity used	Delivery time
	5 09 31 20 032 10 90	plug	1.00	60
	14 09 23 30 047 90	nut	1.00	2
	9 09 17 01 039 10 90	base	1.00	2
	2 09 24 03 064 10 90	nipple	1.00	2
	13 09 24 04 105 90	nut	1.00	2
	8 09 14 10 034 90	seal	1.00	2
	4 09 14 05 022 90	seal	1.00	2
	3 09 14 10 053 90	seal	2.00	2
	1 09 23 10 019-07	nut	1.00	30
	10 09 14 10 190 90	seal	2.00	2
	7 09 14 05 019 90	seal	1.00	60
	6 09 30 04 059 90	hose	2.00	2
	11 90 15 05 065 00 90	cartridge	1.00	2
	12 90 28 10 148 00 90	accessories	1.00	2