


36 020 670

Product version up to 5/15/2020


- cover plate 150 x 90 mm




Required miscellaneous

	<div> <div>Concealed single-lever mixer -</div> <div> <div>•max. recess depth 105 mm</div> <div>•min. recess depth 80 mm</div> </div> </div>	35 020 970 90
---	--	---------------

Recommended miscellaneous

	<div> <div>xGRID Attachment set for integrating in the dry wall construction -</div> </div>	12 340 970 90
---	---	---------------

Required miscellaneous

	<div> <div>Concealed single-lever mixer with backflow preventor -</div> <div> <div>•max. recess depth 105 mm</div> <div>•min. recess depth 80 mm</div> </div> </div>	35 021 970 90
---	--	---------------

Required miscellaneous

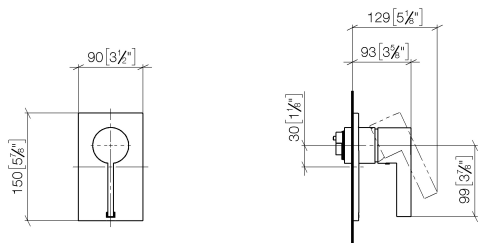
	<div> <div>xGRID Installation track 555 mm -</div> </div>	12 360 970 90
--	---	---------------

Concealed single-lever mixer without diverter - Chrome

SERIES SPECIFIC

36 020 670 Product version up to 5/15/2020

mm [inches]



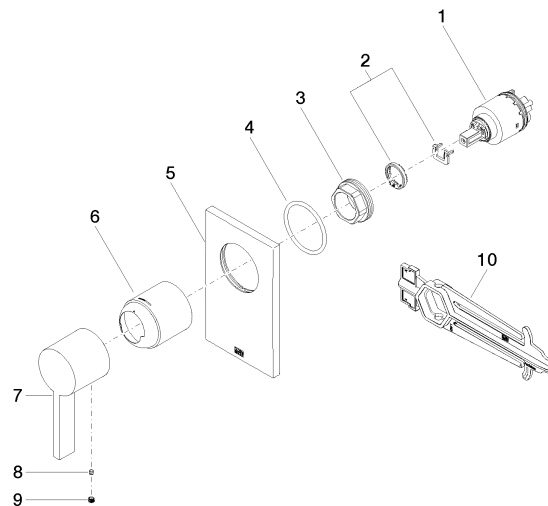
Flow rate chart



Concealed single-lever mixer without diverter - Chrome

SERIES SPECIFIC

36 020 670 Product version up to 5/15/2020



Spare parts list

No.	Item Number	Name	Quantity used	Delivery time
	4 09 14 10 084 90	seal	1.00	2
	6 09 11 02 260-00	sleeve	1.00	10
	5 09 11 02 257-00	plate	1.00	10
	2 04 28 10 149 00 90	accessories	1.00	2
	1 90 15 05 038 00 90	cartridge	1.00	60
	3 09 24 04 448 90	nut	1.00	2
	8 09 31 11 099 90	pin	1.00	2
	7 09 20 67 007-00	handle	1.00	10
	10 90 30 09 064 00 90	key	1.00	2
	9 90 31 20 109 00 90	plug	1.00	2