


36 020 670

Product version up to 5/15/2020


- cover plate 150 x 90 mm




Required miscellaneous

	Concealed single-lever mixer -	35 020 970 90
	<ul style="list-style-type: none"> •max. recess depth 105 mm •min. recess depth 80 mm 	

Recommended miscellaneous

	xGRID Attachment set for integrating in the dry wall construction -	12 340 970 90

Required miscellaneous

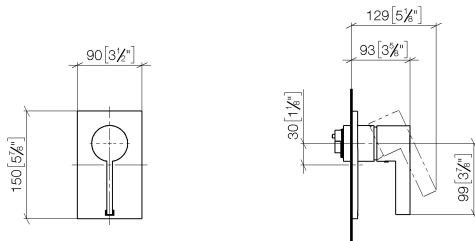
	Concealed single-lever mixer with backflow preventor -	35 021 970 90
	<ul style="list-style-type: none"> •max. recess depth 105 mm •min. recess depth 80 mm 	

Required miscellaneous

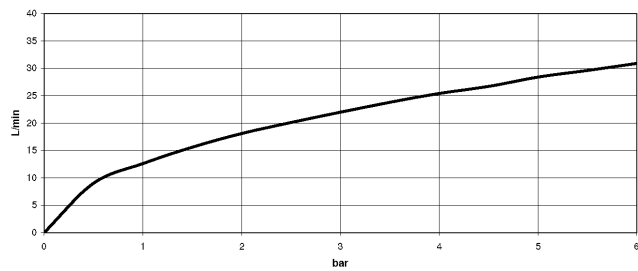
	xGRID Installation track 555 mm -	12 360 970 90

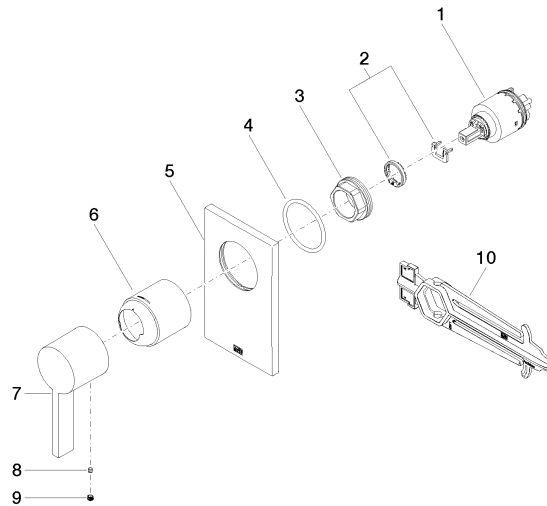
36 020 670 Product version up to 5/15/2020

mm [inches]



Flow rate chart





Spare parts list

No.	Item Number	Name	Quantity used	Delivery time
7	09 20 67 007-06	handle	1.00	10
2	04 28 10 149 00 90	accessories	1.00	2
6	09 11 02 260-06	sleeve	1.00	10
4	09 14 10 084 90	seal	1.00	2
1	90 15 05 038 00 90	cartridge	1.00	60
5	09 11 02 257-06	plate	1.00	10
8	09 31 11 099 90	pin	1.00	2
3	09 24 04 448 90	nut	1.00	2
10	90 30 09 064 00 90	key	1.00	2
9	90 31 20 109 00 90	plug	1.00	2