

Concealed single-lever mixer with cover plate with integrated shower connection - Chrome

SERIES SPECIFIC

36 046 970	Product version from 4/1/2024		
	<ul style="list-style-type: none"> <li>cover plate 80 x 80 mm</li> </ul> <b>Intrinsic protection against back flow.</b>		
	Intrinsic protection against back flow.		
		<div> <div></div> <div>Chrome</div> </div>	36 046 970-00
		<div> <div></div> <div>Brushed Platinum</div> </div>	36 046 970-06
		<div> <div></div> <div>Platinum</div> </div>	36 046 970-08
		<div> <div></div> <div>Dark Chrome</div> </div>	36 046 970-19
		<div> <div></div> <div>Brushed Light Gold</div> </div>	36 046 970-27
		<div> <div></div> <div>Brushed Durabrass (23kt Gold)</div> </div>	36 046 970-28
		<div> <div></div> <div>Matte Black</div> </div>	36 046 970-33
		<div> <div></div> <div>Brushed Champagne (22kt Gold)</div> </div>	36 046 970-46
		<div> <div></div> <div>Champagne (22kt Gold)</div> </div>	36 046 970-47
		<div> <div></div> <div>Brushed Chrome</div> </div>	36 046 970-93
		<div> <div></div> <div>Brushed Dark Platinum</div> </div>	36 046 970-99

Required miscellaneous

	<b>Concealed wall mounting -</b>	35 050 970 90
	<ul style="list-style-type: none"> <li>min. recess depth 80 mm</li> <li>max. recess depth 105 mm</li> </ul>	

## Concealed single-lever mixer with cover plate with integrated shower connection - Chrome

SERIES SPECIFIC

36 046 970 Product version from 4/1/2024

mm [inches]



### Flow rate chart



### Codes & Standards

DIN 4109

ISO 3822

Ü-Zeichen



## Concealed single-lever mixer with cover plate with integrated shower connection - Chrome

SERIES SPECIFIC

---

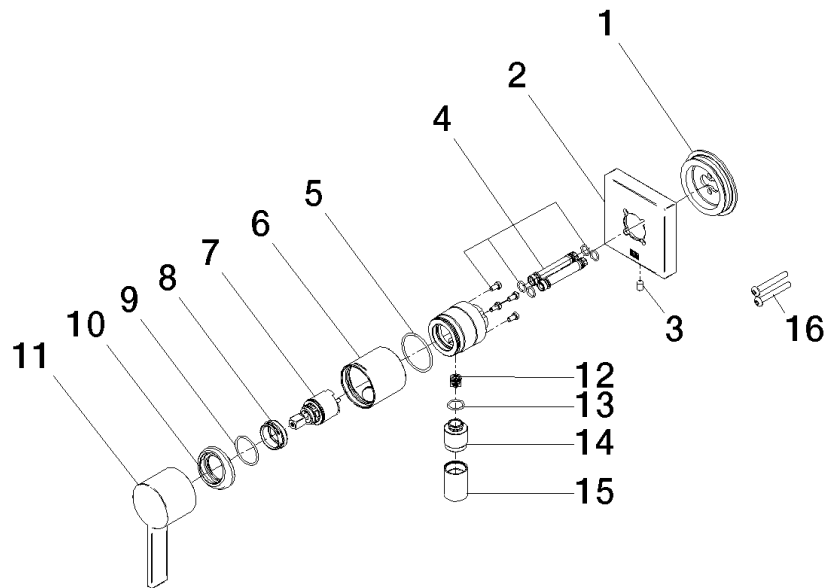
36 046 970 Product version from 4/1/2024

Certificates and sustainability

---

LGA\_38

36 046 970 Product version from 4/1/2024



## Spare parts list

No.	Item Number	Name	Quantity used	Delivery time
4	90 24 01 046 00 90	connection	2.00	2
15	90 21 02 069 00-00	cover	1.00	10
8	09 24 04 266 90	nut	1.00	2
9	09 14 10 120 90	seal	1.00	2
5	09 14 10 111 90	seal	1.00	2
3	09 31 11 144 90	pin	1.00	2
12	09 23 01 131 90	back-flow preventer	1.00	2
10	09 28 30 041-00	cover	1.00	10
14	09 24 03 281-00	nipple	1.00	10
7	90 15 05 044 00 90	cartridge	1.00	2
1	90 30 11 232 00 90	disc	1.00	2
2	90 27 97 046 00-00	rosette	1.00	10
13	90 14 10 021 00 90	seal	1.00	2
6	90 18 40 320 00-00	sleeve	1.00	10
16	90 30 30 229 00 90	screw	2.00	2
11	09 20 97 063-00	handle	1.00	10