



LULU Concealed single-lever mixer with diverter - Chrome

LULU


36 122 710




- automatic diverter
- cover plate 150 x 90 mm

	Chrome	36 122 710-00
	Brushed Platinum	36 122 710-06


Required miscellaneous

	<b>Concealed single-lever mixer with backflow preventor -</b> •max. recess depth 105 mm •min. recess depth 80 mm	35 021 970 90
---	--	---------------


Required miscellaneous

	<b>xGRID Installation track 555 mm -</b>	12 360 970 90
--	--	---------------

Required miscellaneous

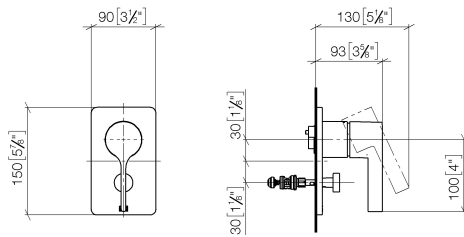
	<b>Concealed single-lever mixer -</b> •max. recess depth 105 mm •min. recess depth 80 mm	35 020 970 90
---	--	---------------

Recommended miscellaneous

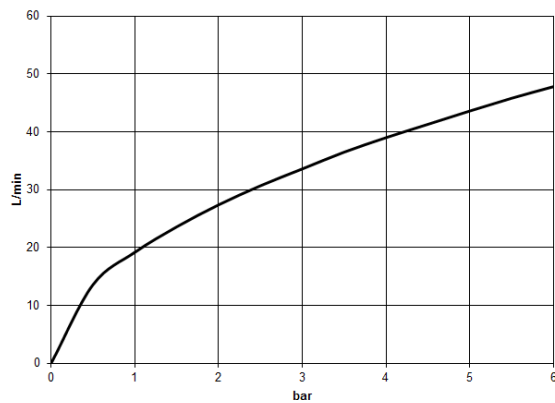
	<b>xGRID Attachment set for integrating in the dry wall construction -</b>	12 340 970 90
---	--	---------------

36 122 710

mm [inches]



### Flow rate chart



### Codes & Standards

DIN 4109

ISO 3822

Ü-Zeichen



## LULU Concealed single-lever mixer with diverter - Chrome

---

LULU

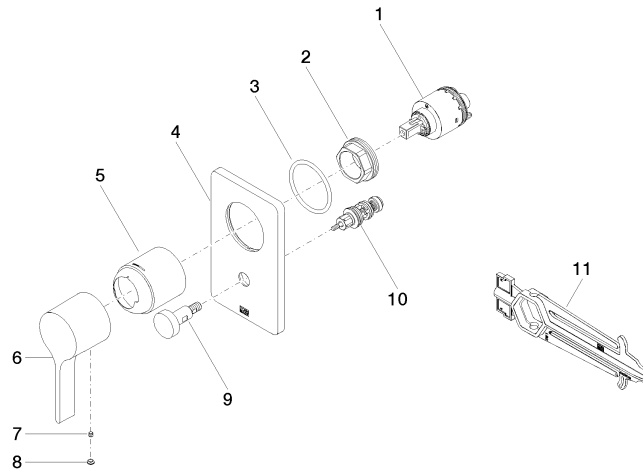
36 122 710

Certificates and sustainability

---

LGA\_29

36 122 710



## Spare parts list

No.	Item Number	Name	Quantity used	Delivery time
7	09 31 11 099 90	pin	1.00	2
10	90 21 34 081 00 90	diverter	1.00	2
2	09 24 04 448 90	nut	1.00	2
6	09 20 80 023-00	handle	1.00	10
9	90 31 09 139 00-00	pull-rod	1.00	10
5	09 11 02 260-00	sleeve	1.00	10
8	90 31 20 087 00-00	plug	1.00	10
3	09 14 10 084 90	seal	1.00	2
4	09 11 02 328-00	plate	1.00	10
1	90 15 05 039 00 90	cartridge	1.00	2
11	90 30 09 064 00 90	key	1.00	2