



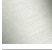
META Concealed two-way diverter - Brushed Dark Platinum

META

36 200 661
Product version from 4/1/2022



- rotary diverter
- without rosette
- handle Ø 60mm
- WRAS

|   |                               |               |
|---|-------------------------------|---------------|
|    | Brushed Dark Platinum         | 36 200 661-99 |
|    | Chrome                        | 36 200 661-00 |
|    | Brushed Platinum              | 36 200 661-06 |
|    | Dark Chrome                   | 36 200 661-19 |
|    | Light Gold                    | 36 200 661-26 |
|    | Brushed Light Gold            | 36 200 661-27 |
|    | Matte Black                   | 36 200 661-33 |
|    | Brushed Dark Brass            | 36 200 661-39 |
|    | Brushed Bronze                | 36 200 661-42 |
|   | Brushed Champagne (22kt Gold) | 36 200 661-46 |
|  | Champagne (22kt Gold)         | 36 200 661-47 |
|  | Brushed Chrome                | 36 200 661-93 |

Required miscellaneous

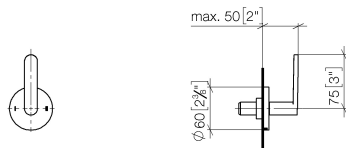


- Concealed two-way diverter -

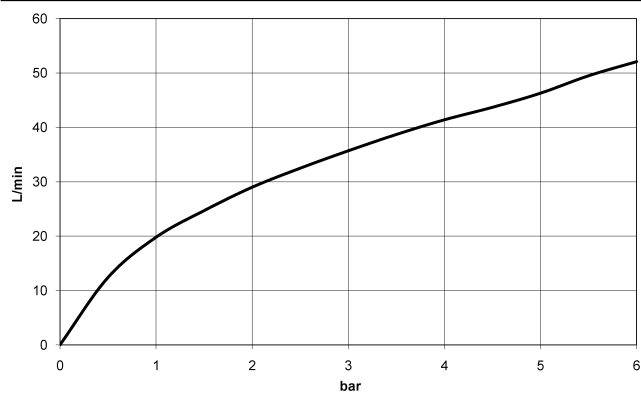
35 202 970 90
- min. recess depth 115 mm
  - max. recess depth 160 mm

36 200 661 Product version from 4/1/2022

mm [inches]



**Flow rate chart**



**Codes & Standards**

DIN 4109

ISO 3822

Scottish Water  
Byelaws

UK Water Supply  
Regulations

Ü-Zeichen



## META Concealed two-way diverter - Brushed Dark Platinum

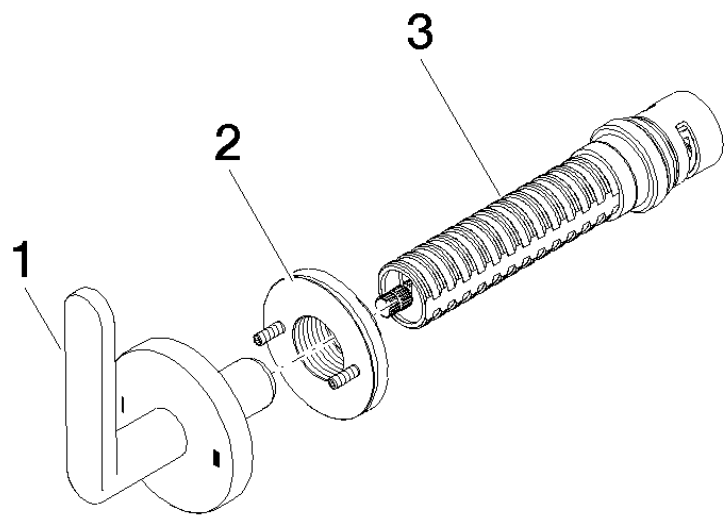
META

36 200 661 Product version from 4/1/2022

Certificates and sustainability

LGA\_38

WRAS\_2307



Spare parts list

| No. | Item Number        | Name     | Quantity used | Delivery time |
|-----|--------------------|----------|---------------|---------------|
| 3   | 90 90 03 304 10 90 | diverter | 1.00          | 2             |
| 2   | 90 21 02 181 00 90 | disc     | 1.00          | 2             |
| 1   | 90 20 66 014 00-99 | handle   | 1.00          | 20            |