





## SYMETRICS Concealed two-way diverter - Brushed Dark Platinum

SYMETRICS

36 200 980 Product version from 4/1/2022



- rotary diverter
- rosette 60 x 60 mm
- WRAS

	Brushed Dark Platinum	36 200 980-99
	Chrome	36 200 980-00
	brushed chrome	36 200 980-93
	Brushed Platinum	36 200 980-06
	Dark Chrome	36 200 980-19
	Brushed Light Gold	36 200 980-27
	Brushed Durabronze (23kt Gold)	36 200 980-28
	Matte Black	36 200 980-33
	Brushed Champagne (22kt Gold)	36 200 980-46
	Champagne (22kt Gold)	36 200 980-47

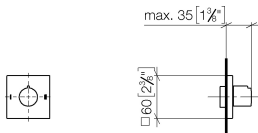
### Required miscellaneous



- Concealed two-way diverter -** 35 202 970 90
- max. recess depth 160 mm
  - min. recess depth 85 mm

36 200 980 Product version from 4/1/2022

mm [inches]



**Flow rate chart**



**Codes & Standards**

DIN 4109

ISO 3822

Scottish Water  
Byelaws

UK Water Supply  
Regulations

Ü-Zeichen



## SYMETRICS Concealed two-way diverter - Brushed Dark Platinum

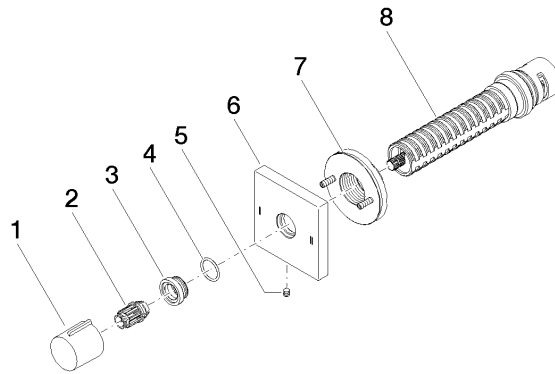
SYMETRICS

36 200 980 Product version from 4/1/2022

Certificates and sustainability

LGA\_38

WRAS\_2307



## Spare parts list

No.	Item Number	Name	Quantity used	Delivery time
2	09 12 12 005 90	fixing cap	1.00	2
3	09 12 12 043-99	base	1.00	20
8	90 90 03 304 10 90	diverter	1.00	2
6	09 27 98 037-99	rosette	1.00	20
1	09 20 98 001-99	handle	1.00	20
5	09 31 11 294 90	pin	1.00	2
7	90 21 02 181 00 90	disc	1.00	2
4	09 14 10 017 90	seal	1.00	2