


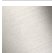
LULU Concealed thermostat with two function volume control - Chrome

LULU


36 426 710 Product version up to 8/24/2020




- rotary diverter with volume control and shut-off function
- cover plate 150 x 90 mm
- temperature control handle with safety limit stop at 38°C
- hot water temperature limiter, can be preset
- WRAS

	Chrome	36 426 710-00
	Brushed Platinum	36 426 710-06


Required miscellaneous

	Concealed thermostat with built-in isolators - •max. recess depth 136 mm •min. recess depth 80 mm	35 426 970 90
-----------------------------------------------------------------------------------	----------------------------------------------------------------------------------------------------------------	---------------


Recommended miscellaneous

	xGRID Attachment set for integrating in the dry wall construction -	12 340 970 90
-------------------------------------------------------------------------------------	----------------------------------------------------------------------------	---------------

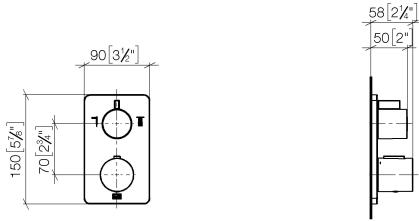
Required miscellaneous

	Concealed thermostat - •max. recess depth 136 mm •min. recess depth 80 mm	35 425 970 90
-----------------------------------------------------------------------------------	----------------------------------------------------------------------------------------	---------------

Required miscellaneous

	xGRID Installation track 555 mm -	12 360 970 90
------------------------------------------------------------------------------------	------------------------------------------	---------------

mm [inches]



Flow rate chart



Codes & Standards

DIN 4109	EN 1111	ISO 3822	Scottish Water Byelaws
UK Water Supply Regulations	Ü-Zeichen	VA-Zeichen	XP P 41-280



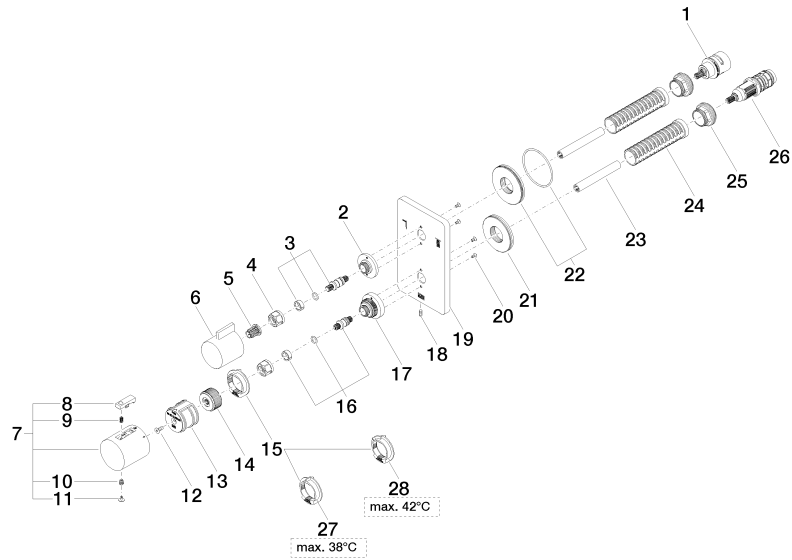
LULU Concealed thermostat with two function volume control - Chrome

LULU

36 426 710 Product version up to 8/24/2020

Certificates and sustainability

ACS_20 ACC LY	LGA_19	ETA_20	DVGW_DW-6512DN0	LGA_19
WRAS_250402				





LULU Concealed thermostat with two function volume control - Chrome

LULU

36 426 710 Product version up to 8/24/2020

Spare parts list

No.	Item Number	Name	Quantity used	Delivery time
6	09 20 67 006-00	handle	1.00	10
18	09 31 11 134 90	pin	1.00	2
1	90 90 03 163 00 90	diverter	1.00	2
14	09 12 12 054 90	base	1.00	2
26	90 15 02 012 00 90	cartridge	1.00	60
27	09 28 10 150 90	regulator	1.00	60
21	09 30 01 188 90	disc	1.00	60
7	90 17 33 004 00-00	handle	1.00	10
5	90 12 12 002 00 90	fixing cap	1.00	2
28	09 28 10 151 90	regulator	1.00	60
25	09 24 04 257 90	nut	2.00	2
17	09 12 12 051-00	base	1.00	10
2	09 12 12 053-00	base	1.00	10
15	09 28 10 143 90	regulator	1.00	60
20	09 30 30 157 90	screw	4.00	2
9	90 16 02 027 00 90	spring	1.00	2
22	90 30 01 190 00 90	disc	1.00	2
19	09 11 02 247-00	plate	1.00	10
4	90 23 30 023 00 90	nut	2.00	2
24	90 18 40 077 01 90	spindle	2.00	2
23	90 23 01 124 00 90	sleeve	2.00	2
11	90 31 20 049 00-00	plug	1.00	10
13	90 12 12 052 00 90	base	1.00	2
10	90 30 30 136 00 90	screw	1.00	2
3	04 29 06 111 01-00	spindle	1.00	10
12	90 30 30 124 00 90	screw	1.00	2
16	04 29 06 024 01-00	spindle	1.00	10
8	90 21 33 011 00-13	handle	1.00	2