

**TARA Wall valve clockwise closing 1/2" - Brushed Durabronze (23kt Gold)**

TARA

36 607 892

- rosette Ø 55 mm
- head part with cut-to-length spindle and sleeve
- WRAS 2011026, 2010066



	Brushed Durabronze (23kt Gold)	36 607 892-28
	Chrome	36 607 892-00
	Brushed Platinum	36 607 892-06
	Platinum	36 607 892-08
	Dark Chrome	36 607 892-19
	Matte Black	36 607 892-33
	Brushed Bronze	36 607 892-42
	Brushed Champagne (22kt Gold)	36 607 892-46
	Champagne (22kt Gold)	36 607 892-47
	Brushed Chrome	36 607 892-93
	Brushed Dark Platinum	36 607 892-99

**Required miscellaneous**

**Wall valve 1/2" -** 35 607 970 90



- max. recess depth 145 mm
- min. recess depth 85 mm

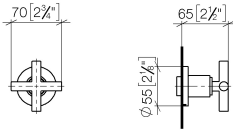


# TARA Wall valve clockwise closing 1/2" - Brushed Durabron (23kt Gold)

TARA

36 607 892

mm [inches]



## Codes & Standards

DIN 4109

EN 1111

EN 200

ISO 3822

Scottish Water  
Byelaws

UK Water Supply  
Regulations

Ü-Zeichen

## Certificates

DVGW\_DW-  
6501DN0

WRAS\_2010

LGA\_29

LGA\_29

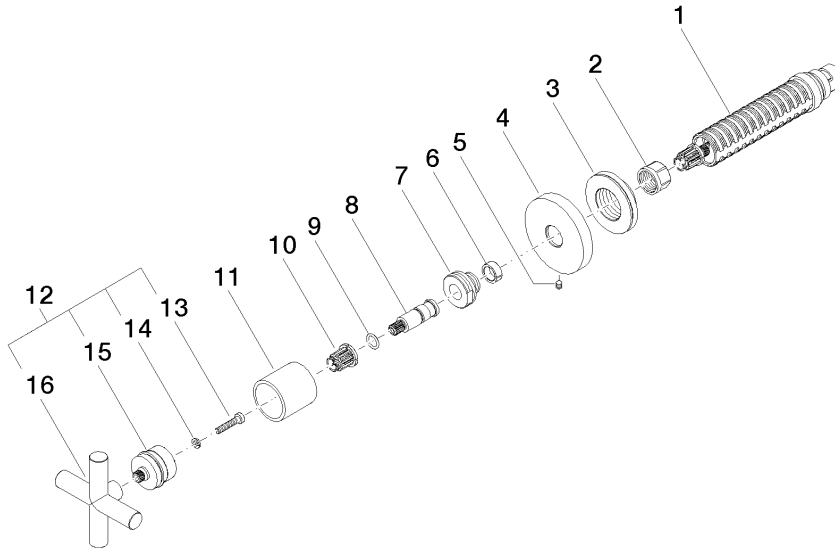
DVGW\_DW-  
6512DN0

WRAS\_2011

36 607 892

Product version up to 10/27/2020

**Product version from 10/27/2020**





TARA Wall valve clockwise closing 1/2" - Brushed Durabronz (23kt Gold)

TARA

36 607 892

Spare parts list

Product version up to 10/27/2020

**Product version from 10/27/2020**

No.	Item Number	Name	Quantity used	Delivery time
	90 90 03 143 00 90	top	16	2