

TARA Wall valve clockwise closing 1/2" - Brushed Champagne (22kt Gold)

TARA

36 607 892

- rosette Ø 55 mm
- head part with cut-to-length spindle and sleeve
- WRAS 2011026, 2010066



	Brushed Champagne (22kt Gold)	36 607 892-46
	Chrome	36 607 892-00
	Brushed Platinum	36 607 892-06
	Platinum	36 607 892-08
	Dark Chrome	36 607 892-19
	Brushed Durabronze (23kt Gold)	36 607 892-28
	Matte Black	36 607 892-33
	Brushed Bronze	36 607 892-42
	Champagne (22kt Gold)	36 607 892-47
	Brushed Chrome	36 607 892-93
	Brushed Dark Platinum	36 607 892-99

Required miscellaneous

- Wall valve 1/2" -** 35 607 970 90
- max. recess depth 145 mm
 - min. recess depth 85 mm



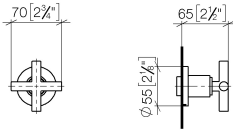


TARA Wall valve clockwise closing 1/2" - Brushed Champagne (22kt Gold)

TARA

36 607 892

mm [inches]



Codes & Standards

DIN 4109

EN 1111

EN 200

ISO 3822

Scottish Water
Byelaws

UK Water Supply
Regulations

Ü-Zeichen

Certificates

DVGW_DW-
6501DN0

WRAS_2010

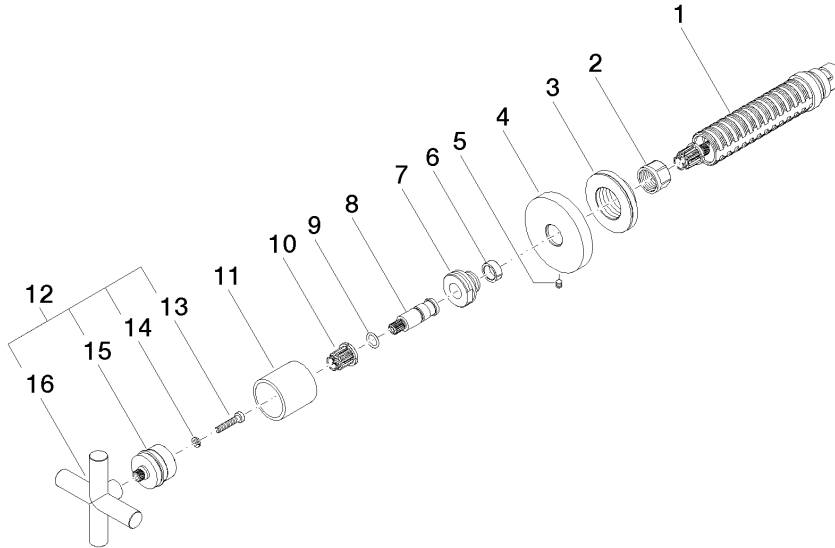
LGA_29

DVGW_DW-
6512DN0

WRAS_2011

36 607 892

Product version from 10/27/2020





TARA Wall valve clockwise closing 1/2" - Brushed Champagne (22kt Gold)

TARA

36 607 892

Spare parts list

Product version from 10/27/2020