

LULU Wall-mounted single-lever basin mixer without pop-up waste - Chrome

LULU

36 860 710



- 200mm projection
- fixed spout
- circular, air-enriched flow
- hole diameter spout 37 mm
- hole diameter single-lever mixer 57 mm
- rosette 78 x 78 mm
- max. flow 7 l/min
- lead-free
- This product can help a building meet the requirements of Green Building Rating Systems, e.g. LEED®, BREEAM®, DGNB
- WRAS



Chrome

36 860 710-00



Brushed Platinum

36 860 710-06

Required miscellaneous



Concealed wall-mounted single-lever mixer -

35 860 970 90

- max. recess depth 95 mm
- min. recess depth 80 mm
- mixer can be placed above, to the left or to the right of the spout.

Required miscellaneous



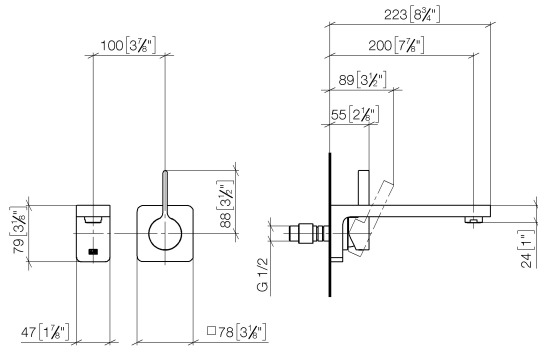
Concealed wall-mounted single-lever mixer mixer on right -

35 816 970 90

- NOTE: Not suitable for concealed installation. Connection by means of angle valves, mounted with screws to back wall.

36 860 710

mm [inches]



Flow rate chart



Codes & Standards

DIN 4109

EN 817

ISO 3822

Scottish Water
Byelaws

UK Water Supply
Regulations

Ü-Zeichen



LULU Wall-mounted single-lever basin mixer without pop-up waste - Chrome

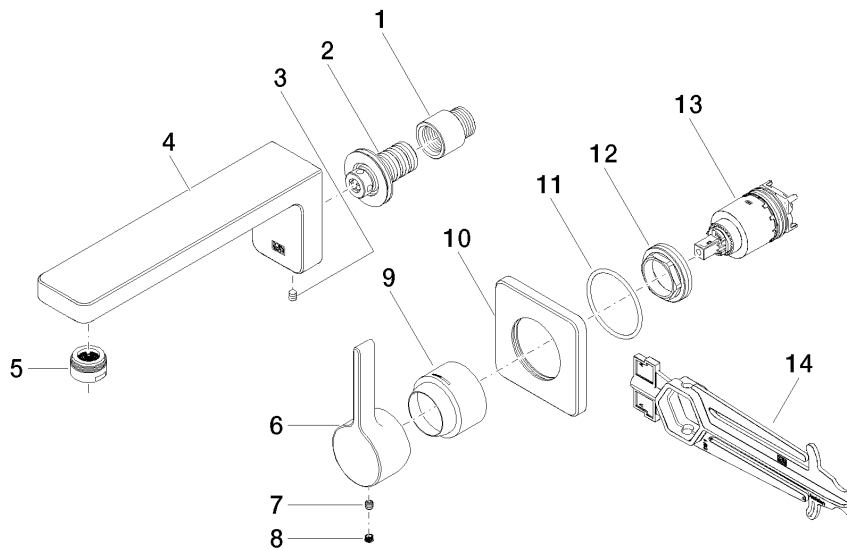
LULU

36 860 710

Certificates and sustainability

WRAS_2107	DVGW_DW-6512DN0	LGA_29
-----------	-----------------	--------

36 860 710



Spare parts list

No.	Item Number	Name	Quantity used	Delivery time
	9 09 11 02 530-00	cover	1.00	10
	13 90 15 05 064 01 90	cartridge	1.00	2
	6 09 20 71 001-00	handle	1.00	10
	5 90 23 01 118 01-00	aerator	1.00	10
	1 09 24 03 072 10 90	nipple	1.00	2
	4 09 11 71 090 10-00	spout	1.00	10
	10 09 27 71 001-00	rosette	1.00	10
	12 09 24 04 105 90	nut	1.00	2
	2 90 24 03 108 00 90	nipple set	1.00	2
	8 90 31 20 109 00 90	plug	1.00	2
	14 90 30 09 064 00 90	key	1.00	2
	3 90 31 11 004 00 90	pin	1.00	2
	7 90 31 11 030 00 90	pin	1.00	2
	11 90 14 10 049 00 90	seal	1.00	2