






## CYO Wall-mounted single-lever basin mixer without pop-up waste - Brushed Durabronz (23kt Gold)

CYO

36 860 811



- 160mm projection
- fixed spout
- rectangular, air-enriched flow
- hole diameter spout 37 mm
- hole diameter single-lever mixer 57 mm
- rosette for mixer 80 x 80mm
- max. flow 4.5 l/min
- lead-free
- This product can help a building meet the requirements of Green Building Rating Systems, e.g. LEED®, BREEAM®, DGNB
- WRAS

	Brushed Durabronz (23kt Gold)	36 860 811-28
	Chrome	36 860 811-00
	Brushed Platinum	36 860 811-06
	Dark Chrome	36 860 811-19
	Brushed Dark Platinum	36 860 811-99

### Required miscellaneous



#### **Concealed wall-mounted single-lever mixer -** 35 860 970 90

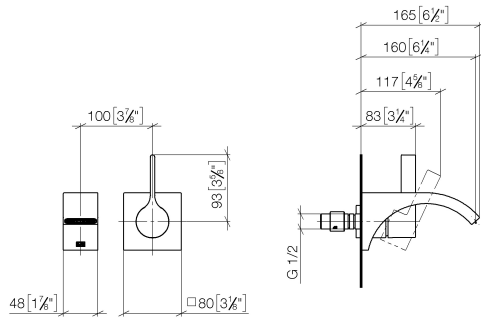
- max. recess depth 95 mm
- min. recess depth 80 mm
- mixer can be placed above, to the left or to the right of the spout.

# CYO Wall-mounted single-lever basin mixer without pop-up waste - Brushed Durabron (23kt Gold)

CYO

36 860 811

mm [inches]



## Flow rate chart



## Codes & Standards

DIN 4109

ISO 3822

NSF372

NSF61

Scottish Water  
Byelaws

UK Water Supply  
Regulations

Ü-Zeichen



CYO Wall-mounted single-lever basin mixer without pop-up waste - Brushed  
Durabrass (23kt Gold)

CYO

36 860 811

Certificates and sustainability

IAPMO_N-4976	WRAS_2107	IAPMO_6397	LGA_38
--------------	-----------	------------	--------

**CYO Wall-mounted single-lever basin mixer without pop-up waste - Brushed  
Durabrand (23kt Gold)**

CYO

36 860 811



**Spare parts list**

No.	Item Number	Name	Quantity used	Delivery time
6	09 11 02 288-28	cover	1.00	20
2	09 24 03 072 10 90	nipple	1.00	2
9	90 15 05 064 01 90	cartridge	1.00	2
3	09 20 80 021-28	handle	1.00	20
1	13 800 811-28	CYO Wall-mounted basin spout without pop-up waste - Brushed Durabrand (23kt Gold)	1.00	20
5	90 31 20 087 00-28	plug	1.00	20
7	09 27 78 039-28	rosette	1.00	20
8	90 14 10 049 00 90	seal	1.00	2
4	90 31 11 030 00 90	pin	1.00	2
10	90 30 09 064 00 90	key	1.00	2