







CL.1 Tissue holder without cover - Brushed Platinum

CL.1

83 500 705 Product version from 3/9/2015



- width 200mm
- height 35 mm
- 70mm projection

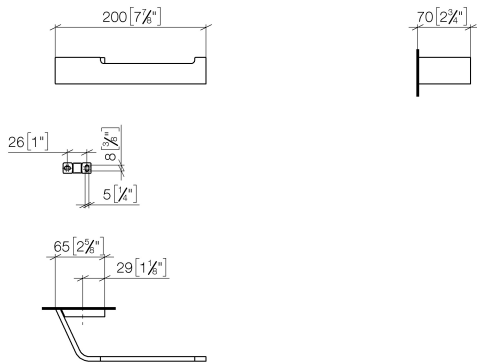
	Brushed Platinum	83 500 705-06
	Chrome	83 500 705-00
	Dark Chrome	83 500 705-19
	Brushed Champagne (22kt Gold)	83 500 705-46
	Champagne (22kt Gold)	83 500 705-47
	Brushed Dark Platinum	83 500 705-99

CL.1 Tissue holder without cover - Brushed Platinum

CL.1

83 500 705 Product version from 3/9/2015

mm [inches]

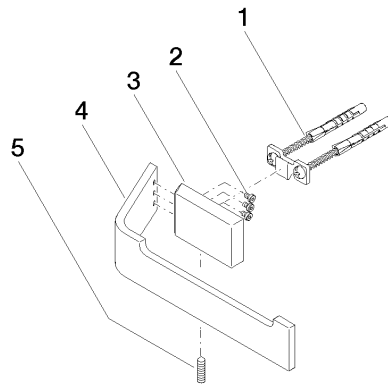


CL.1 Tissue holder without cover - Brushed Platinum

CL.1

83 500 705 Product version from 3/9/2015

Parts for other
finishes can be found
here: [Chrome](#)



Spare parts list

No.	Item Number	Name	Quantity used	Delivery time
4	08 17 70 553-06	holder	1.00	10
2	09 30 30 191 90	screw	3.00	2
3	08 17 70 500-06	holder	1.00	10
1	05 17 20 758 00 90	fixing set	1.00	2
5	04 31 11 113 00 90	pin	1.00	2