

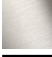






33 522 671

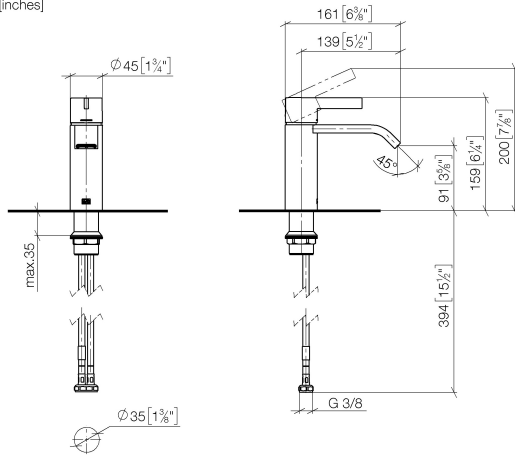


- Ausladung 135 mm
- starrer Auslauf
- rechteckiger luftangereicherter Strahl
- Armaturenhöhe 158 mm
- Höhe bis Luftsprudler 90 mm
- Bohrungsdurchmesser 35 mm
- 2x Druckschlauch M 10 x 1 eingeschraubt, dichtheitsgeprüft
- Durchfluss max. 4,5 l/min
- bleifrei

| | | |
|---|-------------------------|---------------|
|  | Chrom gebürstet | 33 522 671-93 |
|  | Chrom | 33 522 671-00 |
|  | Platin gebürstet | 33 522 671-06 |
|  | Dark Chrome | 33 522 671-19 |
|  | Light Gold gebürstet | 33 522 671-27 |
|  | Schwarz matt | 33 522 671-33 |
|  | Dark Platinum gebürstet | 33 522 671-99 |

33 522 671

mm [inches]



Durchflussdiagramm

