








28 450 845



- Brauseabgang 3/8"
- Rosette 60 x 78 mm
- Anschluss 1/2"

Eigensicher gegen Rückfließen.

| | | |
|-----------------------------------------------------------------------------------|-----------------------|---------------|
|  | Chrom | 28 450 845-00 |
|  | Platin gebürstet | 28 450 845-06 |
|  | Dark Chrome | 28 450 845-19 |
|  | Light Gold gebürstet | 28 450 845-27 |
|  | Schwarz matt | 28 450 845-33 |
|  | Chrom gebürstet | 28 450 845-93 |
|  | Dark Platin gebürstet | 28 450 845-99 |

Empfohlenes Zubehör

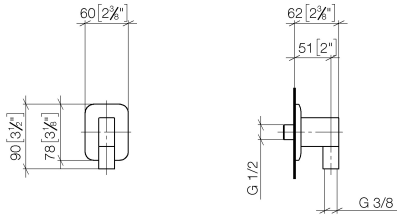
UP-Wandwinkel - 35 085 970 90



- Max. Einbautiefe 163 mm
- Min. Einbautiefe 90 mm

28 450 845

mm [inches]



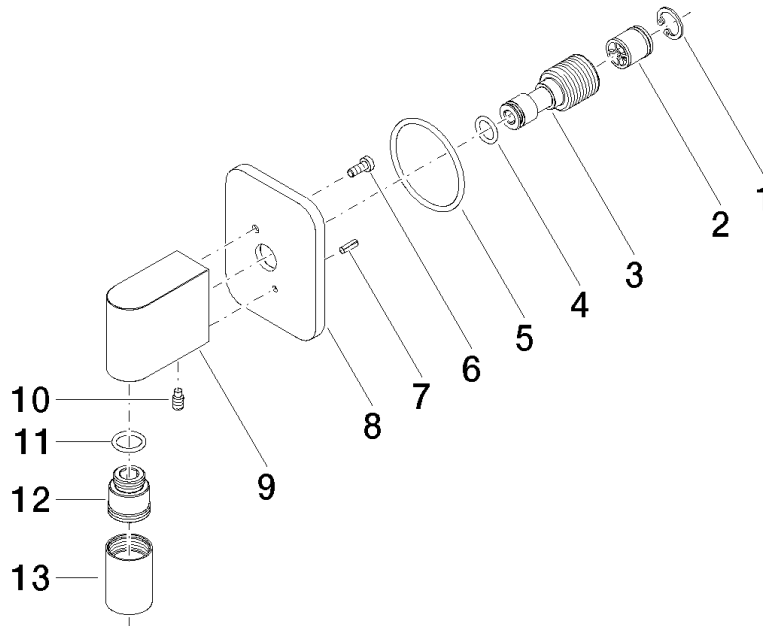
Durchflussdiagramm



Zertifikate

IAPMO_4976 (5). WRAS_2310091.

28 450 845



Ersatzteilstückliste

| Nr. | Artikelnummer | Benennung | Verbaumenge | Lieferzeit |
|-----|--------------------|-----------------------|-------------|------------|
| 1 | 09 16 01 014 90 | Ring | 1 | 2 |
| 2 | 90 23 01 141 00 90 | Rueckflussverhinderer | 1 | 2 |
| 3 | 09 24 03 116 20 90 | Nippel | 1 | 2 |
| 4 | 09 14 10 008 90 | Dichtung | 1 | 2 |
| 5 | 09 14 10 142 90 | Dichtung | 1 | 2 |
| 6 | 09 30 30 054 90 | Schraube | 1 | 2 |
| 7 | 09 31 11 026 90 | Stift | 1 | 2 |
| 8 | 09 27 84 021-00 | Rosette | 1 | 10 |
| 9 | 09 11 03 046-00 | Anschluss | 1 | 10 |
| 10 | 09 31 11 005 90 | Stift | 1 | 2 |
| 11 | 90 14 10 077 00 90 | Dichtung | 1 | 2 |
| 12 | 09 24 03 107 20 90 | Nippel | 1 | 2 |
| 13 | 90 21 02 069 00-00 | Haube | 1 | 10 |