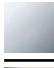










28 528 979



- Brausekopf Ø 55 mm
- Kugelgelenk 25° schwenkbar (in jede Richtung)
- HORIZONTAL RAIN, Durchfluss max. 7 l/min (bei 3 Bar)
- mit Antikalk-System
- Rosette Ø 55 mm
- Anschluss 1/2"

Passt zu: TARA, LISSÉ, VAIA, META

	Champagne gebürstet (22kt Gold)	28 528 979-46
	Chrom	28 528 979-00
	Platin gebürstet	28 528 979-06
	Platin	28 528 979-08
	Messing (23kt Gold)	28 528 979-09
	Dark Chrome	28 528 979-19
	Light Gold	28 528 979-26
	Light Gold gebürstet	28 528 979-27
	Messing gebürstet (23kt Gold)	28 528 979-28
	Schwarz matt	28 528 979-33
	Bronze gebürstet	28 528 979-42
	Champagne (22kt Gold)	28 528 979-47
	Chrom gebürstet	28 528 979-93
	Dark Platinum gebürstet	28 528 979-99

Empfohlenes Zubehör



UP-Wandwinkel -

- Max. Einbautiefe 163 mm
- Min. Einbautiefe 90 mm

35 085 970 90

28 528 979

mm [inches]



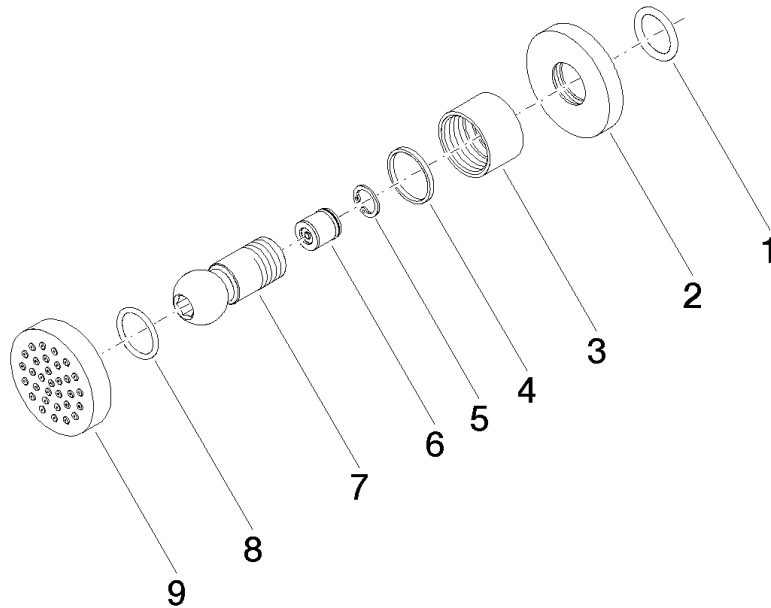
Durchflussdiagramm



Zertifikate

LGA_38652.

28 528 979



Ersatzteilstückliste

Nr.	Artikelnummer	Benennung	Verbaumenge	Lieferzeit
1	90 14 10 026 00 90	Dichtung	1	2
2	09 27 22 019-46	Rosette	1	30
3	09 23 30 026-46	Mutter	1	30
4	09 14 15 010 90	Ring	1	2
5	09 16 01 014 90	Ring	1	2
6	90 23 01 147 00 90	Rueckflussverhinderer	1	2
7	09 21 40 016-46	Anschluss	1	30
8	09 14 10 015 90	Dichtung	1	2
9	90 12 05 027 00-46	Gehaeuse (komplett)	1	30