


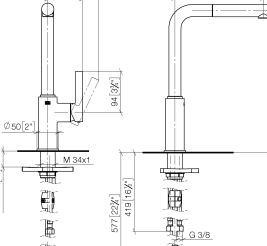


33 950 210



- Ausladung 204 mm
  - schwenkbarer Auslauf 360°
  - luftangereicherter Strahl
  - Durchfluss max. 8 l/min bei 3 bar Fließdruck
  - gewebeumflochtener Brauseschlauch 1500 mm
- Eigensicher gegen Rückfließen.

|   |                            |               |
|---|----------------------------|---------------|
|  | Edelstahl Finish gebürstet | 33 950 210-70 |
|  | Chrom                      | 33 950 210-00 |
|  | Soft Black                 | 33 950 210-69 |



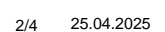
Technical drawing of the 1000 Series 1/2" (Figure 1000 Series 1/2"). The drawing shows two views of the component: a side view (left) and a front view (right). Dimensions are provided in both mm [inches].

**Side View Dimensions:**

- Overall height: 118 [4 1/2"]
- Top flange diameter:  $\varnothing 80$  [3 1/8"]
- Flange thickness: 8 [3/8"]
- Mounting bracket width: 94 [3 3/4"]
- Mounting hole diameter:  $\varnothing 50$  [2"]
- Mounting hole spacing: M 34x1
- Max. hole offset: max. 52 [2"]
- Bottom flange diameter:  $\varnothing 36$  [1 1/4"]

**Front View Dimensions:**

- Overall width: 223 [8 3/4"]
- Top flange diameter:  $\varnothing 204$  [8"]
- Flange thickness: 8 [3/8"]
- Mounting bracket width: 342 [13 1/2"]
- Mounting hole diameter:  $\varnothing 310$  [12 1/4"]
- Mounting hole spacing: M 15x1
- Bottom flange diameter:  $\varnothing 310$  [12 1/4"]
- Bottom flange thickness: 418 [16 1/2"]
- Bottom flange hole diameter:  $\varnothing 377$  [14 7/8"]
- Bottom flange hole spacing: G 3/8"





DORNBRACHT PIUR Einhebelmischer Pull-out - Edelstahl Finish gebürstet

DORNBRACHT

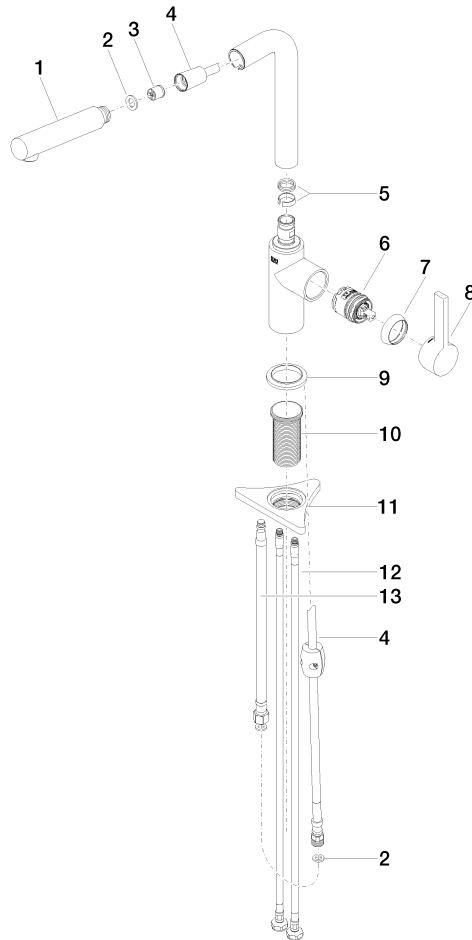
33 950 210

Zertifikate und Nachhaltigkeit

Belgaqua\_23-012-2   ACS\_23 ACC NY   AbP\_10   DVGW\_DW-6506DO0

33 950 210

Ersatzteile für die  
anderen  
Oberflächenvarianten  
finden Sie hier:  
Chrom



## Ersatzteilstückliste

| Nr. | Artikelnummer      | Benennung           | Verbrauchmenge | Lieferzeit |
|-----|--------------------|---------------------|----------------|------------|
| 2   | 90 14 05 081 00 90 | Dichtung            | 1,00           | 2          |
| 5   | 90 14 15 060 00 90 | Dichtungssatz       | 1,00           | 2          |
| 7   | 90 28 30 011 00-70 | Haube               | 1,00           | 2          |
| 6   | 90 15 05 060 00 90 | Kartusche           | 1,00           | 2          |
| 8   | 90 20 21 001 00-70 | Griff               | 1,00           | 2          |
| 10  | 90 30 01 200 00 90 | Schaft              | 1,00           | 2          |
| 3   | 90 23 01 051 00 90 | Durchflussbegrenzer | 1,00           | 2          |
| 13  | 90 30 04 110 00 90 | Schlauch            | 1,00           | 2          |
| 11  | 90 23 10 003 00 90 | Befestigungssatz    | 1,00           | 2          |
| 4   | 90 30 02 101 00 90 | Schlauch            | 1,00           | 2          |
| 9   | 90 27 21 001 00-70 | Rosette             | 1,00           | 2          |
| 12  | 04 30 04 101 00 90 | Schlauch            | 2,00           | 2          |
| 1   | 90 12 11 180 00-70 | Brause              | 1,00           | 2          |