


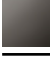




36 060 845

- Abdeckplatte 78 x 78 mm



|   |                         |               |
|---|-------------------------|---------------|
|  | Chrom gebürstet         | 36 060 845-93 |
|  | Chrom                   | 36 060 845-00 |
|  | Platin gebürstet        | 36 060 845-06 |
|  | Dark Chrome             | 36 060 845-19 |
|  | Schwarz matt            | 36 060 845-33 |
|  | Dark Platinum gebürstet | 36 060 845-99 |

**Benötigtes Zubehör**



- UP-Wand-Einhandbatterie -** 35 860 970 90
- Max. Einbautiefe 95 mm
  - Min. Einbautiefe 80 mm

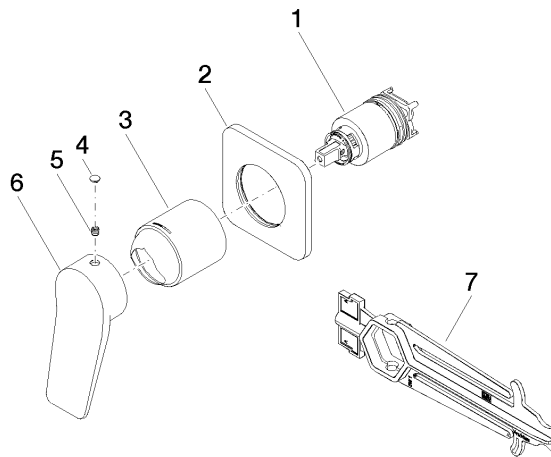


Zertifikate

---

LGA\_29905.

36 060 845



### Ersatzteilstückliste

| Nr. | Artikelnummer      | Benennung | Verbaumenge | Lieferzeit |
|-----|--------------------|-----------|-------------|------------|
| 1   | 90 15 05 046 02 90 | Kartusche | 1           | 2          |
| 2   | 90 27 84 020 00-93 | Rosette   | 1           | 20         |
| 3   | 09 11 02 288-93    | Haube     | 1           | 20         |
| 4   | 90 31 20 087 00-93 | Stopfen   | 1           | 20         |
| 5   | 90 31 11 030 00 90 | Stift     | 1           | 2          |
| 6   | 09 20 84 021-93    | Griff     | 1           | 20         |
| 7   | 90 30 09 064 00 90 | Schlüssel | 1           | 2          |