



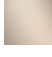




36 200 819



- Drehumstellung
- Rosette Ø 60 mm

	Platin gebürstet	36 200 819-06
	Chrom	36 200 819-00
	Dark Chrome	36 200 819-19
	Messing gebürstet (23kt Gold)	36 200 819-28
	Bronze gebürstet	36 200 819-42
	Champagne gebürstet (22kt Gold)	36 200 819-46
	Champagne (22kt Gold)	36 200 819-47
	Dark Platinum gebürstet	36 200 819-99

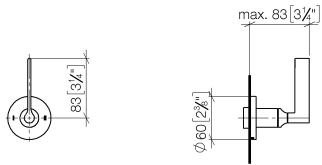
**Benötigtes Zubehör**



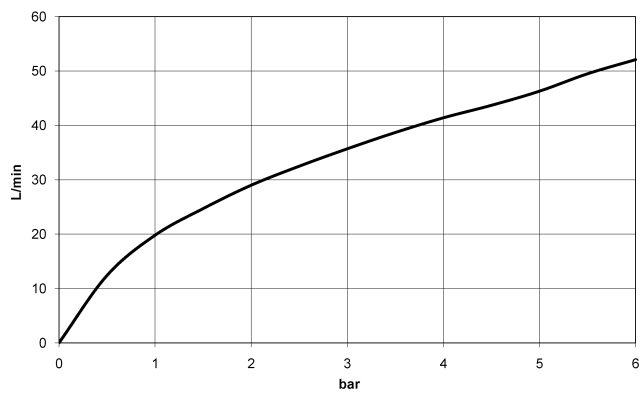
- UP-Zweiwege-Umstellung -** 35 202 970 90
- Max. Einbautiefe 160 mm
  - Min. Einbautiefe 85 mm

36 200 819

mm [inches]



### Durchflussdiagramm

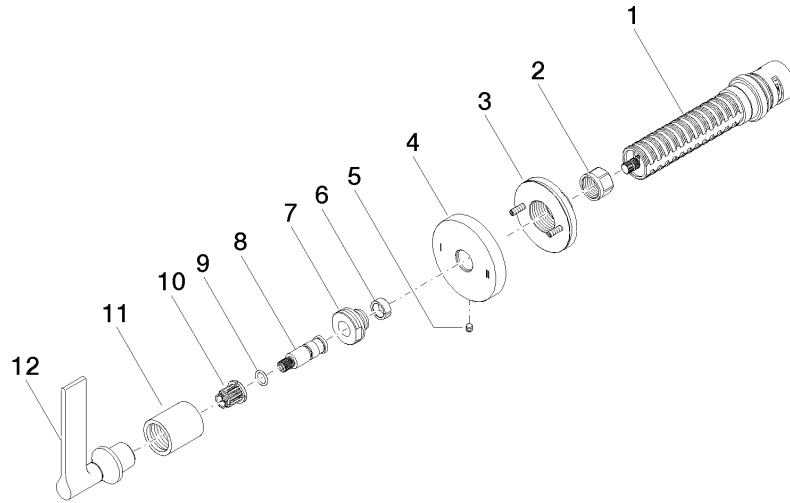


### Zertifikate

LGA\_38379.

WRAS\_2307045.

36 200 819



**Ersatzteilstückliste**

Nr.	Artikelnummer	Benennung	Verbaumenge	Lieferzeit
1	90 90 03 304 10 90	Umstellung	1	2
2	90 23 30 023 00 90	Mutter	1	2
3	90 21 02 181 00 90	Scheibe	1	2
4	09 27 89 118-06	Rosette	1	10
5	09 31 11 294 90	Stift	1	2
6	90 14 15 020 03 90	Ring	1	2
7	09 24 05 002 90	Nippel	1	2
8	09 29 06 022 90	Spindel	1	2
9	90 14 10 060 00 90	Dichtung	1	2
10	90 12 12 002 00 90	Rastbuchse	1	2
11	09 21 02 070-06	Haube	1	10
12	90 20 80 015 01-06	Griff	1	10