









36 607 985

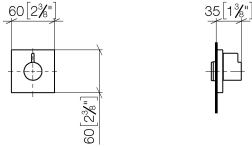


- Rosette 60 x 60 mm
- Oberteil mit ablängbarer Spindel und Hülse

	Dark Chrome	36 607 985-19
	Chrom	36 607 985-00
	Platin gebürstet	36 607 985-06
	Platin	36 607 985-08
	Light Gold gebürstet	36 607 985-27
	Messing gebürstet (23kt Gold)	36 607 985-28
	Chrom gebürstet	36 607 985-93
	Dark Platinum gebürstet	36 607 985-99

36 607 985

mm [inches]



Codes & Standards

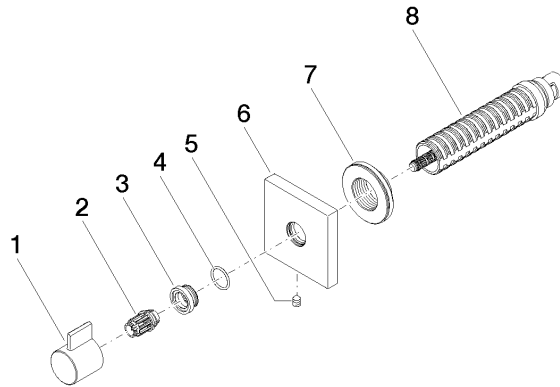
DIN 4109	EN 1111	ISO 3822	Scottish Water Byelaws
UK Water Supply Regulations	Ü-Zeichen		

Zertifikate

WRAS_2010	LGA_29	DVGW_DW-6512DN0	WRAS_2011
-----------	--------	-----------------	-----------

36 607 985

Ersatzteile für die
anderen
Oberflächenvarianten
finden Sie hier:
Chrom





Ersatzteilstückliste