

VAIA Bath spout for wall mounting - Brushed Champagne (22kt Gold)

VAIA

13 801 809 Product version from 3/13/2017



- 200mm projection
- circular normal flow
- hole diameter 37 mm
- rosette Ø 60 mm
- 1/2" connection
- max. flow 21.5 l/min at 3 bar flow pressure
- WRAS

| | | |
|--|--------------------------------|---------------|
|  | Brushed Champagne (22kt Gold) | 13 801 809-46 |
|  | Chrome | 13 801 809-00 |
|  | Brushed Platinum | 13 801 809-06 |
|  | Platinum | 13 801 809-08 |
|  | Dark Chrome | 13 801 809-19 |
|  | Brushed Durabronze (23kt Gold) | 13 801 809-28 |
|  | Brushed Dark Brass | 13 801 809-39 |
|  | Brushed Bronze | 13 801 809-42 |
|  | Champagne (22kt Gold) | 13 801 809-47 |
|  | Brushed Dark Platinum | 13 801 809-99 |

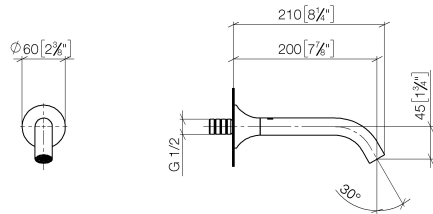
Recommended miscellaneous



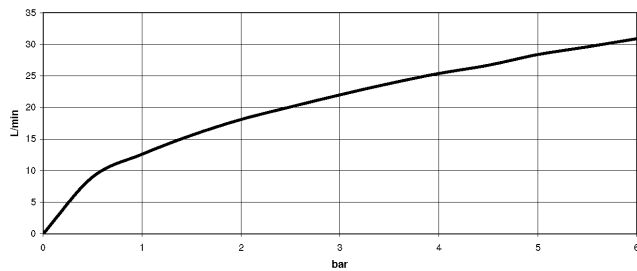
- Concealed wall elbow -**
- max. recess depth 163 mm
 - min. recess depth 90 mm

35 085 970 90

mm [inches]



Flow rate chart



Codes & Standards

DIN 4109

ISO 3822

Scottish Water
Byelaws

UK Water Supply
Regulations

Ü-Zeichen



VAIA Bath spout for wall mounting - Brushed Champagne (22kt Gold)

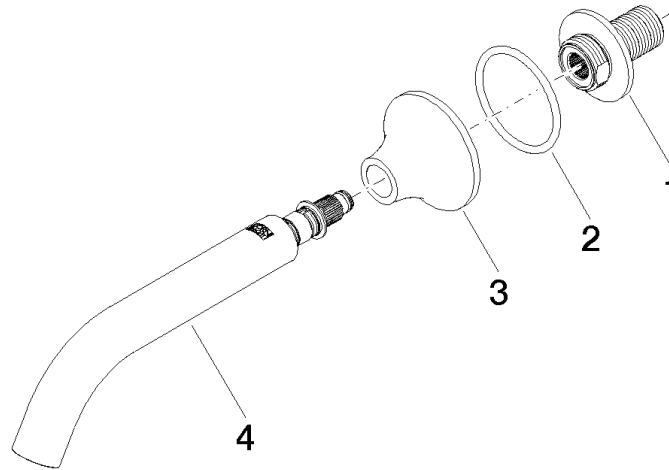
VAIA

13 801 809 Product version from 3/13/2017

Certificates and sustainability

WRAS_2306

LGA_29



Spare parts list

| No. | Item Number | Name | Quantity used | Delivery time |
|-----|--------------------|---------|---------------|---------------|
| 1 | 09 24 03 269 90 | nipple | 1.00 | 2 |
| 3 | 09 27 80 014-46 | rosette | 1.00 | 30 |
| 4 | 90 28 22 315 00-46 | spout | 1.00 | 30 |
| 2 | 09 14 10 084 90 | seal | 1.00 | 2 |