

## META Pillar tap cold water - Chrome

META

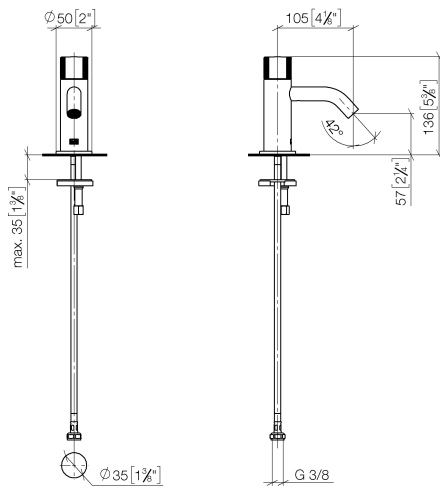
17 500 660 Product version from 7/1/2023



- 105mm projection
- fixed spout
- circular, air-enriched flow
- height of mixer 136 mm
- height up to aerator 57 mm
- hole diameter 35 mm
- 1/2" connection
- rosette Ø 50 mm
- max. flow 5.7 l/min
- lead-free
- This product can help a building meet the requirements of Green Building Rating Systems, e.g. LEED®, BREEAM®, DGNB
- WRAS

	Chrome	17 500 660-00
	Brushed Platinum	17 500 660-06
	Dark Chrome	17 500 660-19
	Light Gold	17 500 660-26
	Brushed Light Gold	17 500 660-27
	Matte Black	17 500 660-33
	Brushed Dark Brass	17 500 660-39
	Brushed Bronze	17 500 660-42
	Brushed Champagne (22kt Gold)	17 500 660-46
	Champagne (22kt Gold)	17 500 660-47
	Brushed Chrome	17 500 660-93
	Brushed Dark Platinum	17 500 660-99

mm [inches]



### Flow rate chart



### Codes & Standards

DIN 4109

ISO 3822

Scottish Water  
Byelaws

UK Water Supply  
Regulations

### Ü-Zeichen



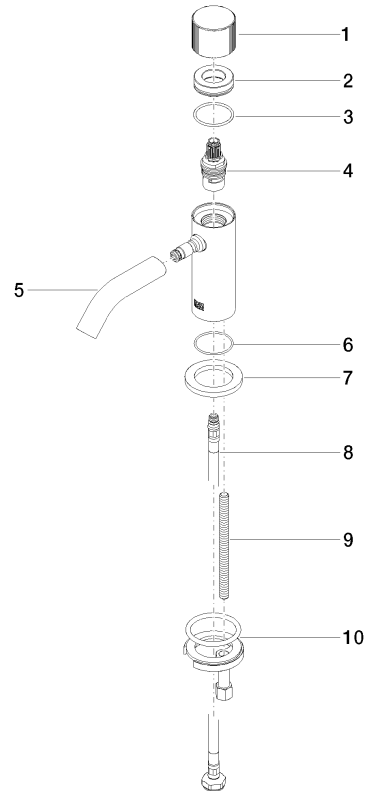
META Pillar tap cold water - Chrome

META

17 500 660    Product version from 7/1/2023

Certificates and sustainability

WRAS\_2001            LGA\_18



### Spare parts list

No.	Item Number	Name	Quantity used	Delivery time
6	09 14 10 202 90	seal	1.00	2
5	90 11 06 212 00-00	spout	1.00	10
10	04 30 11 038 00 90	fixing set	1.00	2
3	09 14 10 040 90	seal	1.00	2
8	04 30 04 100 00 90	hose	1.00	2
4	90 90 03 135 00 90	top	1.00	2
9	09 31 11 012 90	pin	1.00	2
7	09 27 66 006-00	rosette	1.00	10
2	09 21 02 307-00	cover	1.00	10
1	09 20 66 012-00	handle	1.00	10