

META Pillar tap cold water - Brushed Dark Brass

META

17 500 661 Product version from 7/1/2023

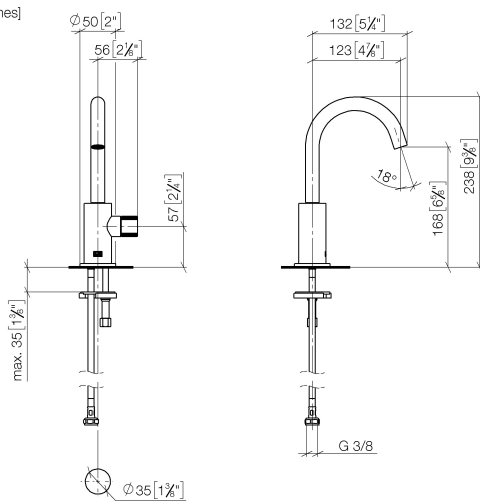


- 123mm projection
- pivotable spout 360°
- circular, air-enriched flow
- height of mixer 238 mm
- height up to aerator 168 mm
- hole diameter 35 mm
- rosette Ø 50 mm
- max. flow 5.7 l/min
- lead-free
- This product can help a building meet the requirements of Green Building Rating Systems, e.g. LEED®, BREEAM®, DGNB
- WRAS

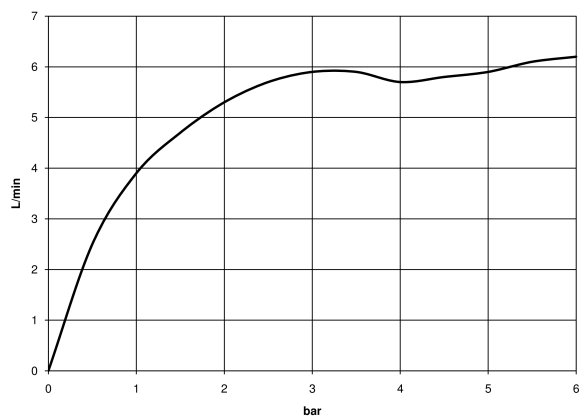
| | | |
|---|-------------------------------|---------------|
|  | Brushed Dark Brass | 17 500 661-39 |
|  | Chrome | 17 500 661-00 |
|  | Brushed Platinum | 17 500 661-06 |
|  | Dark Chrome | 17 500 661-19 |
|  | Light Gold | 17 500 661-26 |
|  | Brushed Light Gold | 17 500 661-27 |
|  | Matte Black | 17 500 661-33 |
|  | Brushed Bronze | 17 500 661-42 |
|  | Brushed Champagne (22kt Gold) | 17 500 661-46 |
|  | Champagne (22kt Gold) | 17 500 661-47 |
|  | Brushed Chrome | 17 500 661-93 |
|  | Brushed Dark Platinum | 17 500 661-99 |

17 500 661 Product version from 7/1/2023

mm [inches]



Flow rate chart



Codes & Standards

DIN 4109

ISO 3822

Ü-Zeichen



META Pillar tap cold water - Brushed Dark Brass

META

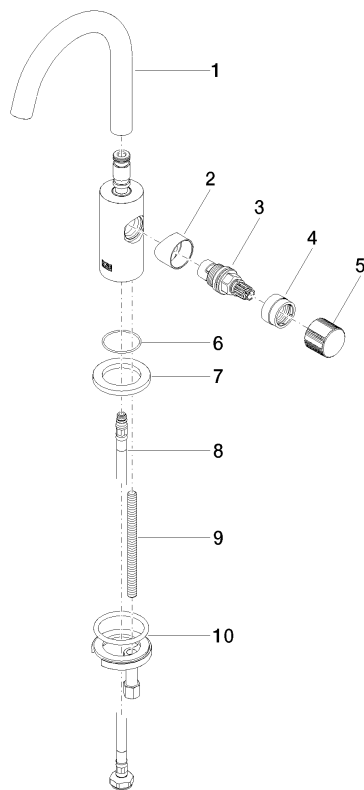
17 500 661 Product version from 7/1/2023

Certificates and sustainability

LGA_18

17 500 661 Product version from 7/1/2023

Parts for other
finishes can be found
here: [Chrome](#)



Spare parts list

| No. | Item Number | Name | Quantity used | Delivery time |
|--|--------------------|------------|---------------|---------------|
| 9 | 09 31 11 012 90 | pin | 1.00 | 2 |
| 1 | 90 28 22 312 00-39 | spout | 1.00 | 30 |
| 10 | 04 30 11 038 00 90 | fixing set | 1.00 | 2 |
| 3 | 90 90 03 131 01 90 | top | 1.00 | 2 |
| 4 | 09 24 04 533-39 | nut | 1.00 | 60 |
| 8 | 04 30 04 100 00 90 | hose | 1.00 | 2 |
| 6 | 09 14 10 202 90 | seal | 1.00 | 2 |
| 5 | 09 20 66 013-39 | handle | 1.00 | 60 |
| 2 | 09 18 20 221-39 | base | 1.00 | - |
| Spare part can no longer be ordered, please order the replacement item | | | | |
| 7 | 09 27 66 006-39 | rosette | 1.00 | 60 |