

TARA HOT & COLD WATER DISPENSER - Chrome

TARA

17 871 888 Product version from 3/1/2025



- 146mm projection
- pivotable spout 360°
- laminar flow
- height of mixer 289 mm
- height up to laminar flow regulator 180 mm
- hole diameter 35 mm
- provides filtered, hot water up to 93°C
- Provides filtered water
- max. flow 3.8 l/min at 3 bar flow pressure
- mechanical valve
- lead-free
- lever

• This product can help a building meet the requirements of Green Building Rating Systems, e.g. LEED®, BREEAM®, DGNB

A minimum flow pressure of 3 bar is necessary for the HOT & COLD WATER DISPENSER to work perfectly in conjunction with a hot water tank and filter.

The installation must be above a kitchen sink.

The filter cartridge must be changed every six months. The installation instructions contain further information for guidance.

Detailed planning information and technical data can be found at

www.dornbracht.com/professional

Not compatible with reverse osmosis filtration

A minimum flow pressure of 3 bar is necessary for the HOT & COLD WATER DISPENSER to work perfectly in conjunction with a hot water tank and filter.

The installation must be above a kitchen sink.

The filter cartridge must be changed every six months. The installation instructions contain further information for guidance.

Detailed planning information and technical data can be found at www.dornbracht.com/professional

Not compatible with reverse osmosis filtration

| | | |
|--|--------------------------------|---------------|
| | Chrome | 17 871 888-00 |
| | Brushed Platinum | 17 871 888-06 |
| | Platinum | 17 871 888-08 |
| | Durabronze (23kt Gold) | 17 871 888-09 |
| | Dark Chrome | 17 871 888-19 |
| | Brushed Durabronze (23kt Gold) | 17 871 888-28 |
| | Matte Black | 17 871 888-33 |
| | Brushed Bronze | 17 871 888-42 |
| | Brushed Champagne (22kt Gold) | 17 871 888-46 |
| | Champagne (22kt Gold) | 17 871 888-47 |
| | Brushed Chrome | 17 871 888-93 |
| | Brushed Dark Platinum | 17 871 888-99 |

Required miscellaneous



Hot water tank incl. filter -

12 892 970 90

Required miscellaneous

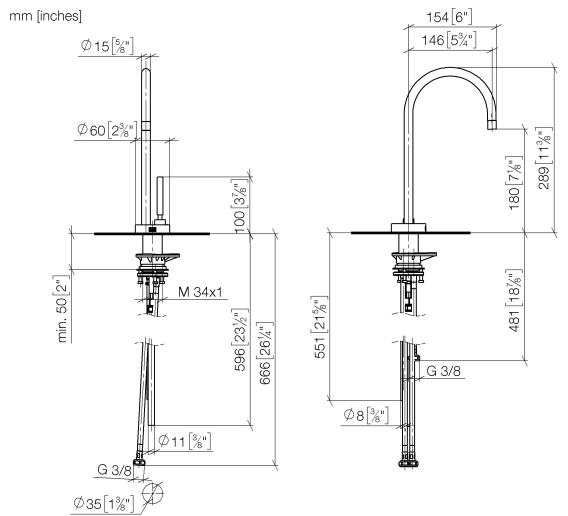


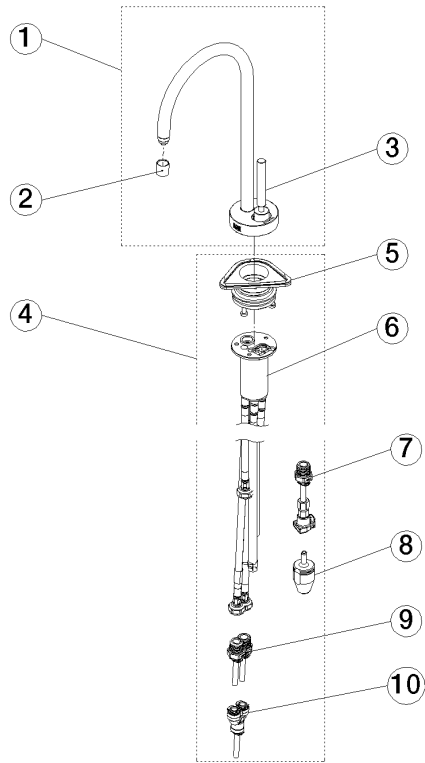
Hose set

12 530 970 90

17 871 888 Product version from 3/1/2025

mm [inches]





Spare parts list

| No. | Item Number | Name | Quantity used | Delivery time |
|-----|--------------------|-------|---------------|---------------|
| 1 | 90 17 87 188 80-00 | spout | 1.00 | 10 |
| 2 | 90 17 87 179 01 90 | set | 1.00 | 2 |