

VAIA Two-hole bridge mixer for rinsing/Profi spray - Brushed Champagne (22kt Gold)

VAIA

19 815 809 Product version from 7/1/2023



- 241mm projection
- pivotable spout 360°
- air-enriched flow
- max. flow 7 l/min at 3 bar flow pressure
- lead-free
- This product can help a building meet the requirements of Green Building Rating Systems, e.g. LEED®, BREEAM®, DGNB

Two-hole mixer for combining with rinsing/Profi spray only

| | | |
|---|-------------------------------|---------------|
|  | Brushed Champagne (22kt Gold) | 19 815 809-46 |
|  | Chrome | 19 815 809-00 |
|  | Brushed Platinum | 19 815 809-06 |
|  | Platinum | 19 815 809-08 |
|  | Durabrass (23kt Gold) | 19 815 809-09 |
|  | Dark Chrome | 19 815 809-19 |
|  | Brushed Durabrass (23kt Gold) | 19 815 809-28 |
|  | Matte Black | 19 815 809-33 |
|  | Brushed Bronze | 19 815 809-42 |
|  | Champagne (22kt Gold) | 19 815 809-47 |
|  | Brushed Chrome | 19 815 809-93 |
|  | Brushed Dark Platinum | 19 815 809-99 |

Recommended miscellaneous

VAIA Dispenser with rosette - Brushed Champagne (22kt Gold) 82 434 809-46



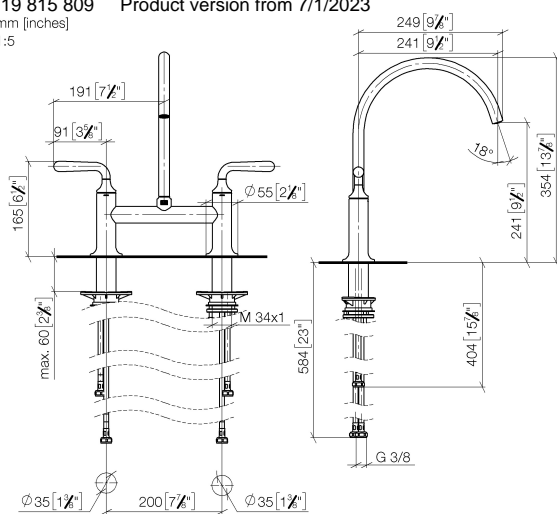
VAIA Two-hole bridge mixer for rinsing/Profi spray - Brushed Champagne (22kt Gold)

VAIA

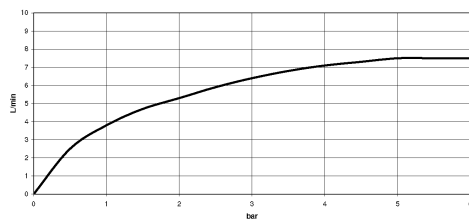
19 815 809 Product version from 7/1/2023

mm [inches]

1:5



Flow rate chart



Codes & Standards

DIN 4109

ISO 3822

Ü-Zeichen



VAIA Two-hole bridge mixer for rinsing/Profi spray - Brushed Champagne (22kt Gold)

VAIA

19 815 809 Product version from 7/1/2023

Certificates and sustainability

LGA_38

VAIA Two-hole bridge mixer for rinsing/Profi spray - Brushed Champagne (22kt Gold)

VAIA

19 815 809 Product version from 7/1/2023

Parts for other
finishes can be found
here: [Chrome](#)



Spare parts list

| No. | Item Number | Name | Quantity used | Delivery time |
|-----|--------------------|------------|---------------|---------------|
| 1 | 90 28 22 396 00-46 | spout | 1.00 | 30 |
| 8 | 90 90 03 131 00 90 | top | 1.00 | 2 |
| 7 | 04 30 04 101 00 90 | hose | 2.00 | 2 |
| 5 | 04 30 11 040 00 90 | fixing set | 2.00 | 2 |
| 3 | 90 12 12 232 00 90 | fixing cap | 2.00 | 2 |
| 2 | 90 20 80 057 00-46 | handle | 2.00 | 30 |
| 6 | 04 30 04 100 00 90 | hose | 2.00 | 2 |
| 4 | 90 90 03 130 00 90 | top | 1.00 | 2 |