

TARA Single-hole basin mixer with pop-up waste - Brushed Durabrass (23kt Gold)

TARA

22 513 892



- 165mm projection
- pivotable spout 360°
- circular, air-enriched flow
- height of mixer 295 mm
- height up to aerator 172 mm
- hole diameter 35 mm
- rosette Ø 59 mm
- 2x screw-in M 10 x 1 pressure hose, leak-tested
- max. flow 7 l/min
- lead-free
- This product can help a building meet the requirements of Green Building Rating Systems, e.g. LEED®, BREEAM®, DGNB

Only suitable for basins with an overflow.

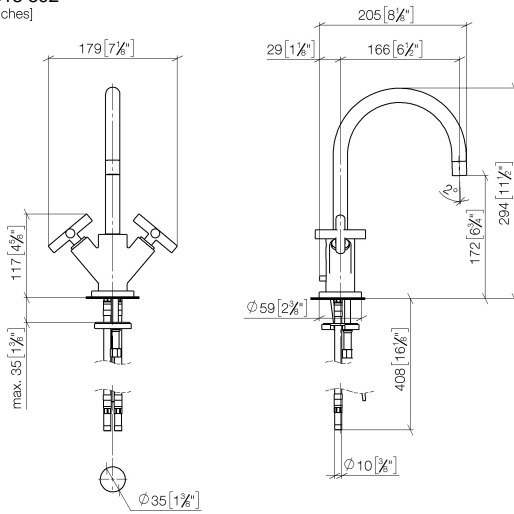
| | | |
|--|-------------------------------|---------------|
|  | Brushed Durabrass (23kt Gold) | 22 513 892-28 |
|  | Chrome | 22 513 892-00 |
|  | Brushed Platinum | 22 513 892-06 |
|  | Platinum | 22 513 892-08 |
|  | Dark Chrome | 22 513 892-19 |
|  | Matte Black | 22 513 892-33 |
|  | Brushed Champagne (22kt Gold) | 22 513 892-46 |
|  | Champagne (22kt Gold) | 22 513 892-47 |
|  | Brushed Chrome | 22 513 892-93 |
|  | Brushed Dark Platinum | 22 513 892-99 |

TARA Single-hole basin mixer with pop-up waste - Brushed Durabron (23kt Gold)

TARA

22 513 892

mm [inches]



Flow rate chart



Certificates

ETA_18512.

WRAS_1810003.

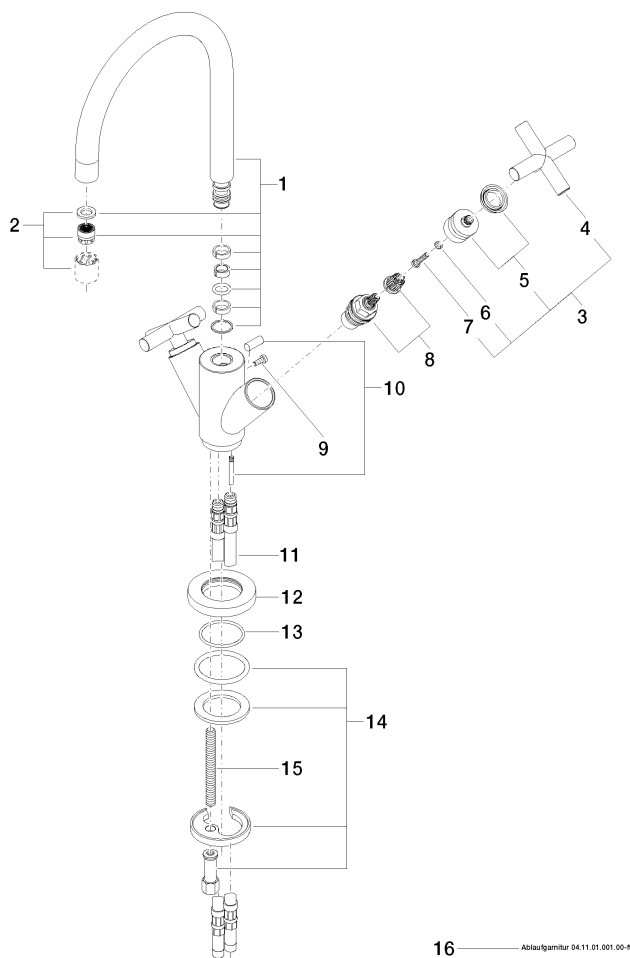
LGA_18920.

GDV_0400194.

TARA Single-hole basin mixer with pop-up waste - Brushed Durabronz (23kt Gold)

TARA

22 513 892
Parts for other
finishes can be found
here: Chrome



Spare parts list

| No. | Item Number | Name | Quantity used | Delivery time |
|-----|--------------------|--------------|---------------|---------------|
| 1 | 90 28 22 213 01-28 | spout | 1 | 20 |
| 2 | 90 23 01 028 03-28 | aerator | 1 | 20 |
| 3 | 90 20 89 010 10-28 | handle | 2 | 20 |
| 4 | 09 20 89 010-28 | handle | 2 | 60 |
| 5 | 90 12 12 007 00-28 | base | 2 | 20 |
| 6 | 90 30 11 029 00 90 | disc | 2 | 2 |
| 7 | 90 30 30 075 00 90 | screw | 2 | 2 |
| 8 | 90 90 03 151 00 90 | top | 2 | 2 |
| 9 | 09 30 30 054 90 | screw | 1 | 2 |
| 10 | 04 20 89 035 80-28 | pull-rod | 1 | 20 |
| 11 | 04 30 04 016 00 90 | hose | 2 | 60 |
| 12 | 09 28 10 132-28 | ring | 1 | 20 |
| 13 | 09 14 10 134 90 | seal | 1 | 2 |
| 14 | 04 30 11 038 00 90 | fixing set | 1 | 2 |
| 15 | 09 31 11 011 90 | pin | 1 | 2 |
| 16 | 90 11 01 001 00-28 | pop-up waste | 1 | 20 |