



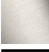



CL.1 Single-lever bath mixer with stand pipe for free-standing assembly with hand shower set - Brushed Champagne (22kt Gold)

CL.1

25 863 705



- 238mm projection
- rectangular spray pattern with 55 individual jets
- max. spout flow rate 24.6 l/min
- Hand shower: COMPACT RAIN, max. flow rate 6.8 l/min (at 3 bar)
- bar-type hand shower with anti-scale system
- wall bracket
- automatic bath/shower diverter
- total height 935 - 1005 mm
- stand pipe height 598 - 668 mm
- height up to aerator 852 – 922 mm
- push-on rosette 131 x 131 mm
- metal shower hose 1250mm with integrated anti-twist protection

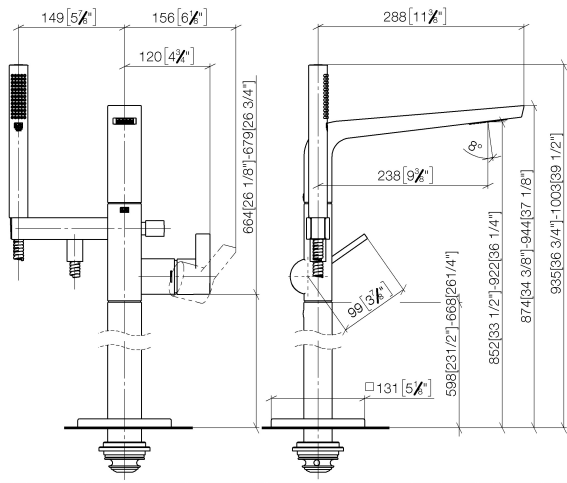
| | | |
|--|-------------------------------|---------------|
|  | Brushed Champagne (22kt Gold) | 25 863 705-46 |
|  | Chrome | 25 863 705-00 |
|  | Brushed Platinum | 25 863 705-06 |
|  | Dark Chrome | 25 863 705-19 |
|  | Champagne (22kt Gold) | 25 863 705-47 |
|  | Brushed Dark Platinum | 25 863 705-99 |

CL.1 Single-lever bath mixer with stand pipe for free-standing assembly with hand shower set - Brushed Champagne (22kt Gold)

CL.1

25 863 705

mm [inches]



Flow rate chart



Codes & Standards

EN 1717



CL.1 Single-lever bath mixer with stand pipe for free-standing assembly with
hand shower set - Brushed Champagne (22kt Gold)

CL.1

25 863 705

Certificates

Belgaqua_24-003-2

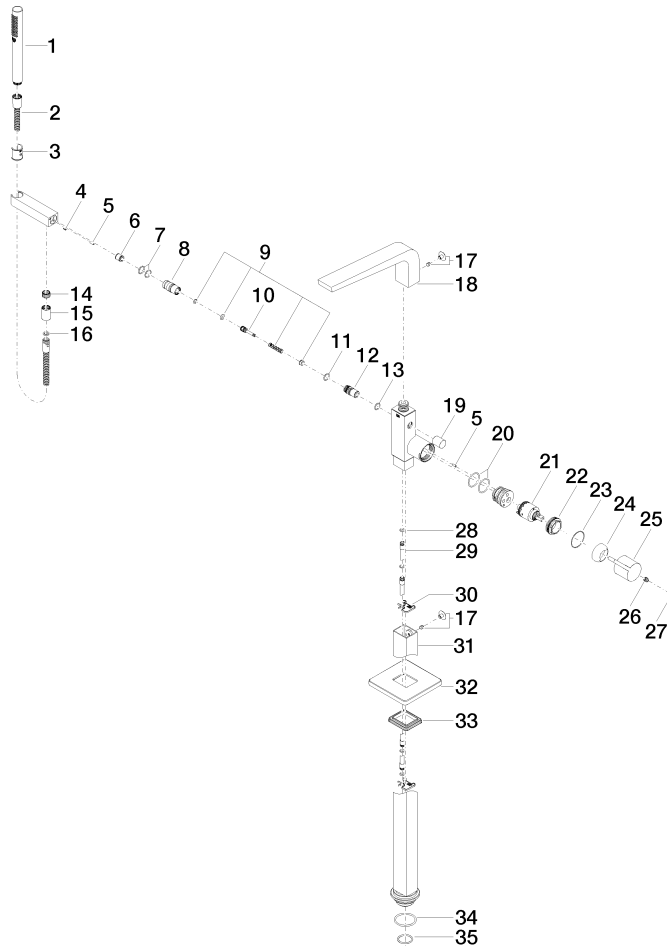
CL.1 Single-lever bath mixer with stand pipe for free-standing assembly with hand shower set - Brushed Champagne (22kt Gold)

CL.1

25 863 705

Product version from 7/1/2023

Parts for other
finishes can be found
here: [Chrome](#)





CL.1 Single-lever bath mixer with stand pipe for free-standing assembly with
hand shower set - Brushed Champagne (22kt Gold)

CL.1

25 863 705

Spare parts list

Product version from 7/1/2023

| No. | Item Number | Name | Quantity used | Delivery time |
|-----|--------------------|--------|---------------|---------------|
| | 90 12 11 140 30-46 | shower | 43 | 30 |