

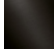
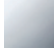

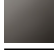
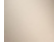

CL.1 Single-lever bath mixer with stand pipe for free-standing assembly with hand shower set - Brushed Dark Platinum

CL.1

25 863 705



- 238mm projection
- rectangular spray pattern with 55 individual jets
- max. spout flow rate 24.6 l/min
- Hand shower: COMPACT RAIN, max. flow rate 6.8 l/min (at 3 bar)
- bar-type hand shower with anti-scale system
- wall bracket
- automatic bath/shower diverter
- total height 935 - 1005 mm
- stand pipe height 598 - 668 mm
- height up to aerator 852 – 922 mm
- push-on rosette 131 x 131 mm
- metal shower hose 1250mm with integrated anti-twist protection

| | | |
|---|-------------------------------|---------------|
|  | Brushed Dark Platinum | 25 863 705-99 |
|  | Chrome | 25 863 705-00 |
|  | Brushed Platinum | 25 863 705-06 |
|  | Dark Chrome | 25 863 705-19 |
|  | Brushed Champagne (22kt Gold) | 25 863 705-46 |
|  | Champagne (22kt Gold) | 25 863 705-47 |

Required miscellaneous



Concealed floor mounting -

35 945 970 90

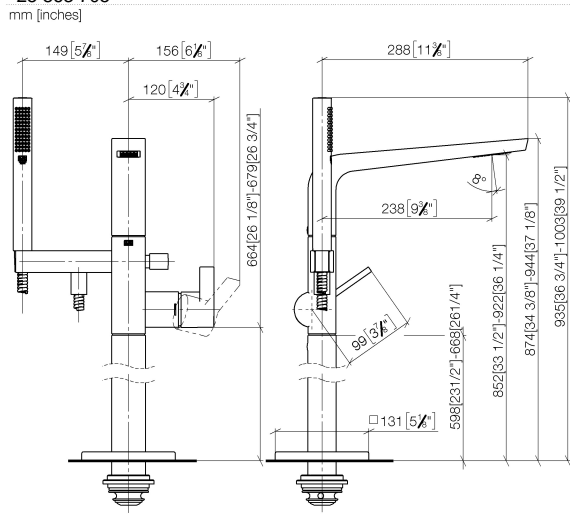
- max. recess depth 150 mm
- min. recess depth 80 mm

CL.1 Single-lever bath mixer with stand pipe for free-standing assembly with hand shower set - Brushed Dark Platinum

CL.1

25 863 705

mm [inches]



Flow rate chart



Certificates

Belgaqua_19_77_27. LGA_29727.

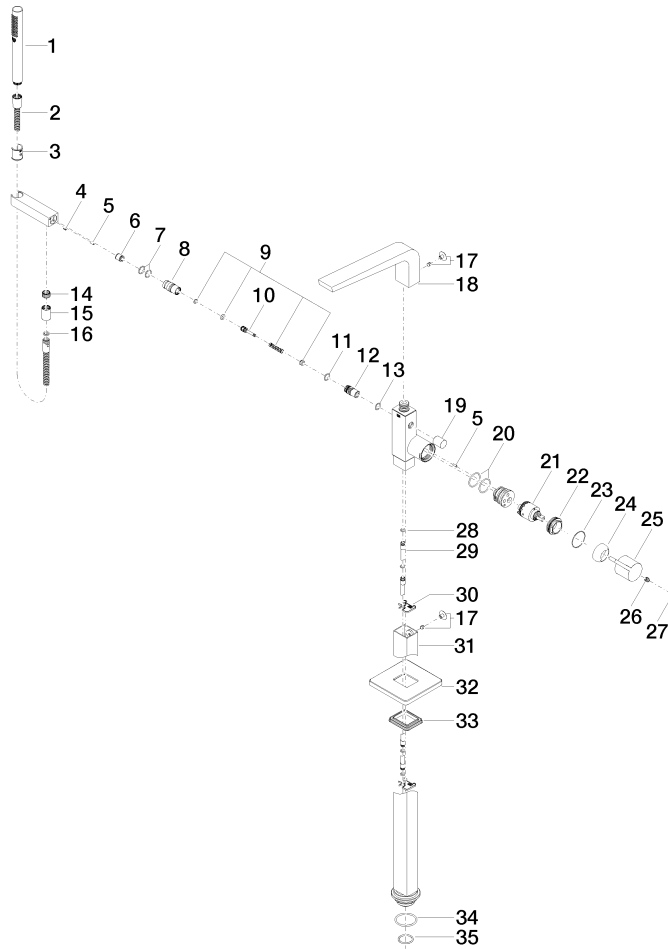
IAPMO_4976 (4).

Belgaqua_24-003-27_1.

CL.1 Single-lever bath mixer with stand pipe for free-standing assembly with hand shower set - Brushed Dark Platinum

CL.1

25 863 705



CL.1 Single-lever bath mixer with stand pipe for free-standing assembly with hand shower set - Brushed Dark Platinum

CL.1

25 863 705

Spare parts list

| No. | Item Number | Name | Quantity used | Delivery time |
|-----|--------------------|---|---------------|---------------|
| 1 | 90 12 11 140 30-99 | shower | 1 | 30 |
| 2 | 90 30 02 072 00-99 | Metal shower hose 1/2" x 3/8" x 1250 mm - Brushed Dark Platinum | 1 | 30 |
| 3 | 09 18 40 118 90 | sleeve | 1 | 2 |
| 4 | 09 31 11 058 90 | pin | 1 | 2 |
| 5 | 09 31 11 040 90 | pin | 3 | 2 |
| 6 | 90 23 01 141 00 90 | back-flow preventer | 1 | 2 |
| 7 | 90 14 10 010 00 90 | seal | 2 | 2 |
| 8 | 09 24 03 130-00 | nipple | 1 | 10 |
| 9 | 90 16 02 023 00 90 | spring | 1 | 2 |
| 10 | 09 31 09 094 20-99 | pull-rod | 1 | 30 |
| 11 | 90 14 10 055 00 90 | seal | 1 | 2 |
| 12 | 09 21 34 080-99 | nipple | 1 | 30 |
| 13 | 90 14 10 033 00 90 | seal | 1 | 2 |
| 14 | 09 24 03 069 90 | nipple | 1 | 2 |
| 15 | 90 21 02 069 00-99 | cover | 1 | 30 |
| 16 | 90 14 20 026 00 90 | seal | 1 | 2 |
| 17 | 04 31 20 034 00 90 | plug | 2 | 2 |
| 18 | 90 11 70 008 00-99 | spout | 1 | 30 |
| 19 | 09 20 71 031-99 | handle | 1 | 30 |
| 20 | 09 14 10 148 90 | seal | 2 | 2 |
| 21 | 90 15 05 039 00 90 | cartridge | 1 | 2 |
| 22 | 09 24 04 298 90 | nut | 1 | 2 |
| 23 | 09 14 10 037 90 | seal | 1 | 2 |
| 24 | 09 28 30 036-99 | cover | 1 | 30 |
| 25 | 09 20 67 014-99 | handle | 1 | 30 |
| 26 | 90 31 11 030 00 90 | pin | 1 | 2 |
| 27 | 90 31 20 087 00-99 | plug | 1 | 30 |
| 28 | 09 14 10 139 90 | seal | 2 | 2 |
| 29 | 04 28 22 025 00 90 | connection | 2 | 2 |
| 30 | 09 20 93 051 90 | holder | 2 | 2 |
| 31 | 04 28 22 024 00-99 | pipe | 1 | 30 |
| 32 | 09 27 71 011-99 | rosette | 1 | 30 |
| 33 | 09 14 03 107 90 | seal | 1 | 2 |
| 34 | 09 14 10 084 90 | seal | 1 | 2 |
| 35 | 09 14 10 018 90 | seal | 1 | 2 |