




26 413 626



- slide bar
- Pipe diameter 18 mm
- gauge 800 mm
- metal shower hose 1750mm with integrated anti-twist protection
- shower hose connector 3/8"
- WRAS

This article does not include a hand shower!

	Brushed Chrome	26 413 626-93
	Chrome	26 413 626-00
	Matte Black	26 413 626-33

26 413 626



**Codes & Standards**

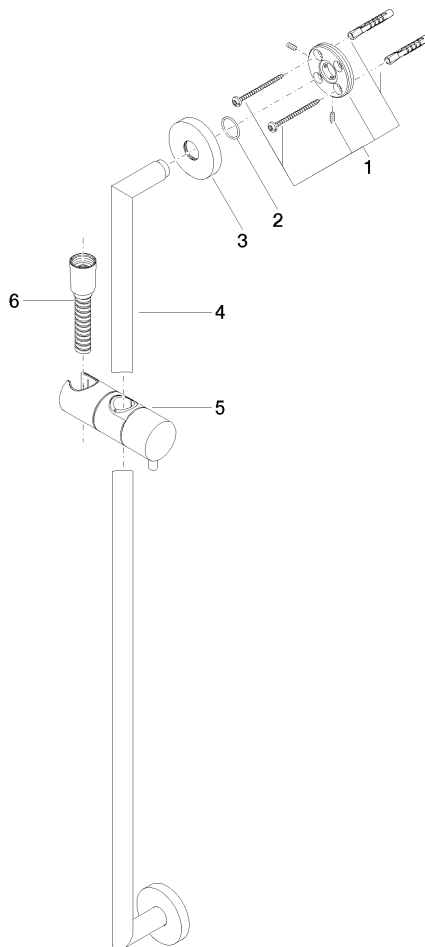
Scottish Water Byelaws	UK Water Supply Regulations
---------------------------	--------------------------------

**Certificates and sustainability**

WRAS\_2009

26 413 626

Parts for other  
finishes can be found  
here: [Chrome](#)



## Spare parts list

No.	Item Number	Name	Quantity used	Delivery time
1	05 17 62 500 00 90	fixing set	2.00	2
3	08 27 62 500-93	rosette	2.00	20
6	28 322 970-93	Metal shower hose 1/2" x 3/8" x 1750 mm - Brushed Chrome	1.00	20
4	05 28 22 590 01-93	bar	1.00	20
5	12 580 970-93	Slide unit - Brushed Chrome	1.00	20
2	90 14 10 032 00 90	seal	2.00	2