

**TARA Showerpipe without hand shower FlowReduce 220 mm - Brushed Platinum**

TARA

26 633 892 Product version from 4/1/2024



**Rain shower:**

- rain shower Ø 220 mm
- overhead shower: rain flow
- max. rainshower flow 7 l/min
- Function from: l/min

**hand shower:**

**Control element:**

- rotary diverter for fixed-riser shower/hand shower
- 1500 mm metal shower hose

**Technical data:**

- shower with fixed riser projection 420mm
- height of fittings up to rain shower (bottom edge) 1007mm
- height of fittings up to top edge of elbow 1167mm
- rosette for wall mounting Ø 57mm
- rosette for shower holder Ø 55mm
- rosette for shower mixer Ø 65mm
- Pipe diameter 20 mm
- gauge 150 mm - 13 mm
- 1/2" connection

**Notes:**

- This product can help a building meet the requirements of Green Building Rating Systems, e.g. LEED®, BREEAM®, DGNB

This article does not include a hand shower!

Intrinsic protection against back flow.

	Brushed Platinum	26 633 892-06
	Chrome	26 633 892-00
	Platinum	26 633 892-08
	Dark Chrome	26 633 892-19
	Brushed Durabrass (23kt Gold)	26 633 892-28
	Matte Black	26 633 892-33
	Brushed Dark Brass	26 633 892-39
	Brushed Bronze	26 633 892-42
	Brushed Champagne (22kt Gold)	26 633 892-46
	Champagne (22kt Gold)	26 633 892-47
	Brushed Chrome	26 633 892-93
	Brushed Dark Platinum	26 633 892-99

TARA Showerpipe without hand shower FlowReduce 220 mm - Brushed Platinum


TARA

26 633 892    Product version from 4/1/2024


Required miscellaneous

	<b>Hand shower - Brushed Platinum</b>	28 017 979-06
---	---------------------------------------	---------------


Required miscellaneous

	<b>Hand shower FlowReduce - Brushed Platinum</b>	28 016 979-06 0010
---	--	--------------------

Required miscellaneous

	<b>Hand shower - Brushed Platinum</b>	28 012 979-06
---	---------------------------------------	---------------

Required miscellaneous

	<b>Hand shower - Brushed Platinum</b>	28 016 979-06
---	---------------------------------------	---------------


Required miscellaneous

	<b>SERIES-VARIOUS Hand shower FlowReduce - Brushed Platinum</b>	28 029 979-06 0010
---	---	--------------------


Required miscellaneous

	<b>SERIES-VARIOUS Hand shower FlowReduce - Brushed Platinum</b>	28 027 979-06 0010
---	---	--------------------


Required miscellaneous

	<b>Hand shower FlowReduce - Brushed Platinum</b>	28 012 979-06 0010
---	--	--------------------


Required miscellaneous

	<b>Hand shower - Brushed Platinum</b>	28 018 979-06
---	---------------------------------------	---------------

Required miscellaneous

	<b>Hand shower - Brushed Platinum</b>	28 015 979-06
---	---------------------------------------	---------------

Required miscellaneous

	<b>Hand shower FlowReduce - Brushed Platinum</b>	28 018 979-06 0010
---	--	--------------------

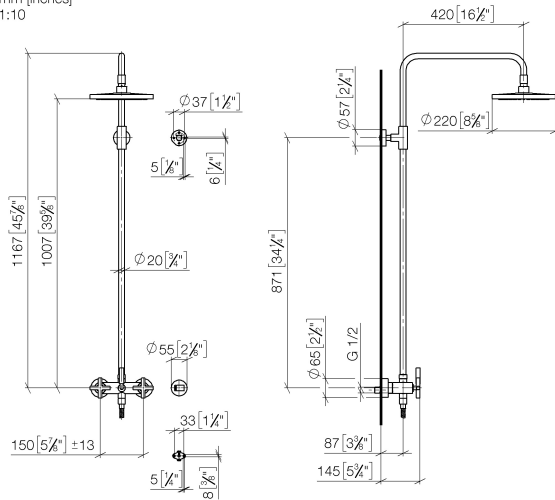
Required miscellaneous

	<b>SERIES-VARIOUS Hand shower FlowReduce - Brushed Platinum</b>	28 025 979-06 0010
---	---	--------------------

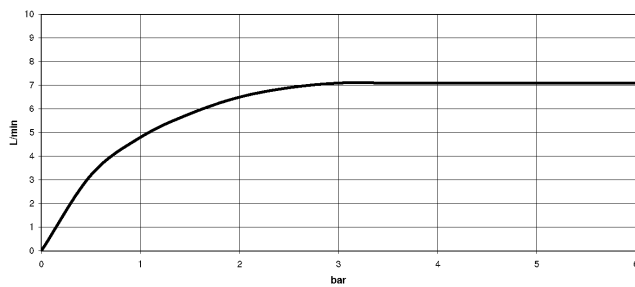
# TARA Showerpipe without hand shower FlowReduce 220 mm - Brushed Platinum

TARA

26 633 892 Product version from 4/1/2024  
mm [inches]  
1:10



Flow rate chart



## Codes & Standards

DIN 4109

EN 1717

ISO 3822

Scottish Water  
Byelaws

UK Water Supply  
Regulations

Ü-Zeichen



## TARA Showerpipe without hand shower FlowReduce 220 mm - Brushed Platinum

TARA

---

26 633 892 Product version from 4/1/2024

Certificates and sustainability

---

Belgaqua\_21-023-2 WRAS\_2204

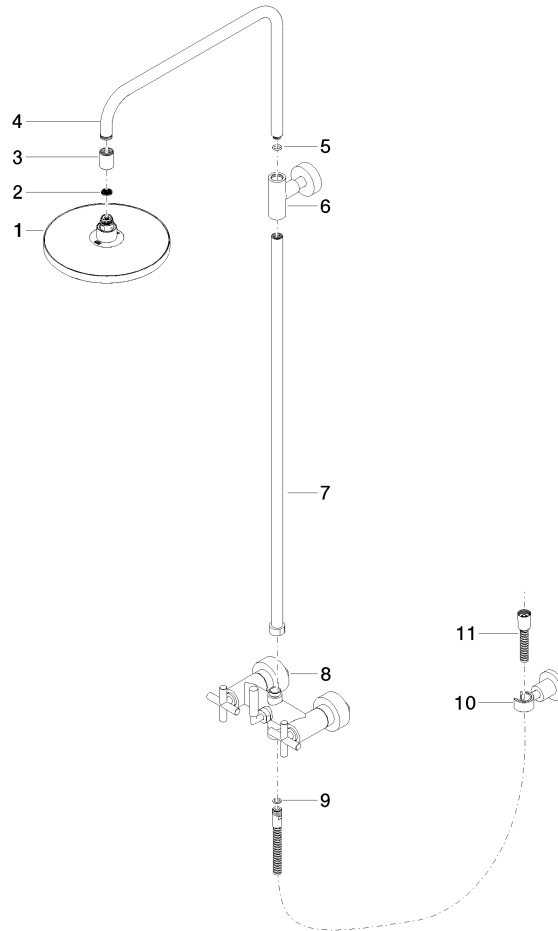
LGA\_38

## TARA Showerpipe without hand shower FlowReduce 220 mm - Brushed Platinum

TARA

26 633 892 Product version from 4/1/2024

Parts for other  
finishes can be found  
here: [Chrome](#)



### Spare parts list

No.	Item Number	Name	Quantity used	Delivery time
6	90 17 11 037 00-06	holder	1.00	10
10	28 050 892-06	TARA Wall bracket - Brushed Platinum	1.00	10
3	09 24 03 177 20-06	adaptor	1.00	10
4	04 28 22 101 20-06	spout	1.00	10
8	04 17 10 020 01-06	fitting	1.00	10
11	28 304 970-06	Metal shower hose 1/2" x 3/8" x 1500 mm - Brushed Platinum	1.00	2
7	90 28 22 096 00-06	pipe	1.00	10
2	09 23 01 039 90	sieve	1.00	2
9	90 14 20 026 00 90	seal	1.00	2
1	90 12 05 092 20-06	shower	1.00	10
5	90 14 10 011 00 90	seal	1.00	2