

Profi spray set - Brushed Bronze

SERIES-VARIOUS

27 799 970

Product version from 10/1/2024




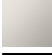





- spray flow
- automatic diverter for spout/Profi spray set
- height of mixer 665 mm
- individual rosette diameter 55mm
- profi spray hole diameter 30mm
- sprayface with anti-scaling system
- lead-free

Can only be combined with 32815682, 33826861, 32815861, 33836888, 32816888, 20816892, 33836875, 32815875.

Intrinsic protection against back flow.

Operating unit can be positioned freely.

|                                                                                   |                       |               |
|-----------------------------------------------------------------------------------|-----------------------|---------------|
|  | Brushed Bronze        | 27 799 970-42 |
|  | Chrome                | 27 799 970-00 |
|  | Brushed Platinum      | 27 799 970-06 |
|  | Platinum              | 27 799 970-08 |
|  | Dark Chrome           | 27 799 970-19 |
|  | Brushed Chrome        | 27 799 970-93 |
|  | Brushed Dark Platinum | 27 799 970-99 |

27 799 970 Product version from 10/1/2024

mm [inches]  
1:10



Flow rate chart



## Codes & Standards

DIN 4109

EN 1717

ISO 3822

NSF372

NSF61

Ü-Zeichen



Profi spray set - Brushed Bronze

SERIES-VARIOUS

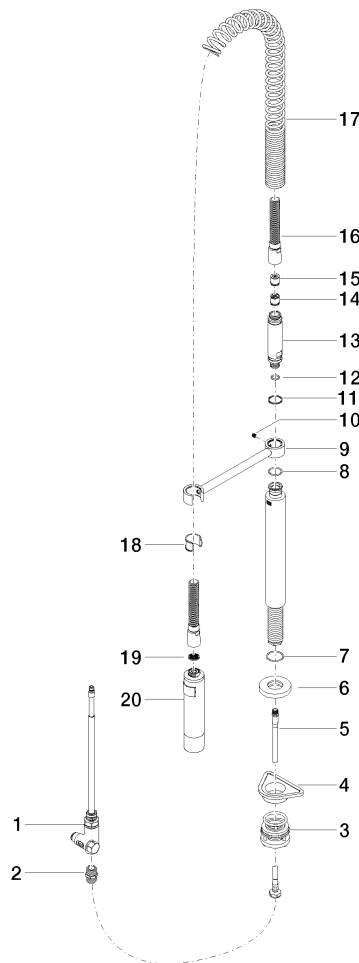
27 799 970 Product version from 10/1/2024

Certificates and sustainability

IAPMO\_6397      LGA\_38      Belgaqua\_24-005-2    IAPMO\_N-4976

27 799 970 Product version from 10/1/2024

Parts for other  
finishes can be found  
here: [Chrome](#)



## Spare parts list

| No. | Item Number           | Name                | Quantity used | Delivery time |
|-----|-----------------------|---------------------|---------------|---------------|
|     | 13 09 30 01 067 10-42 | adaptor             | 1.00          | 60            |
|     | 6 90 27 86 000 00-42  | rosette             | 1.00          | 20            |
|     | 15 09 23 01 046 90    | back-flow preventer | 1.00          | 2             |
|     | 14 90 23 01 141 00 90 | back-flow preventer | 1.00          | 2             |
|     | 9 04 17 20 014 00-42  | holder              | 1.00          | 60            |
|     | 8 09 14 10 031 90     | seal                | 1.00          | 2             |
|     | 5 04 30 04 104 00 90  | hose                | 1.00          | 2             |
|     | 3 04 23 10 004 03 90  | fixing set          | 1.00          | 2             |
|     | 17 09 16 02 034 90    | spring              | 1.00          | 2             |
|     | 18 90 18 40 035 00 90 | sleeve              | 1.00          | 2             |
|     | 1 90 17 09 046 12 90  | diverter            | 1.00          | 2             |
|     | 16 90 30 02 065 00-42 | hose                | 1.00          | 40            |
|     | 12 09 14 10 003 90    | seal                | 1.00          | 2             |
|     | 2 90 24 03 250 00 90  | nipple              | 1.00          | 2             |
|     | 10 09 31 11 049 90    | pin                 | 1.00          | 2             |
|     | 4 09 18 40 090 90     | sleeve              | 1.00          | 2             |
|     | 11 09 14 15 012 90    | ring                | 1.00          | 2             |
|     | 7 09 14 10 120 90     | seal                | 1.00          | 2             |
|     | 20 04 12 11 094 10-42 | shower              | 1.00          | 60            |
|     | 19 09 23 01 039 90    | sieve               | 1.00          | 2             |