


28 504 832 Product version from 1/1/2023



- 180-210mm projection
- ball-joint pivotable through 30°
- normal flow
- with anti-scale system
- spray head Ø 100mm
- rosette Ø 55 mm
- 1/2" connection
- max. flow 7.6 l/min
- rosette Ø 55 mm
- WRAS

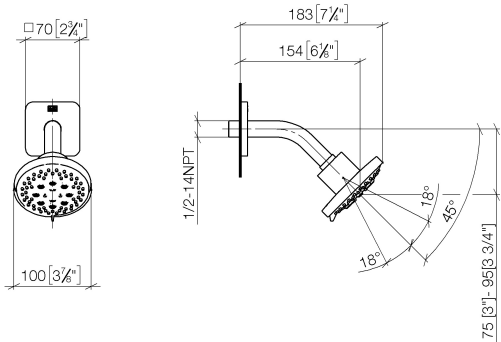
	Soft Black	28 504 832-69
	Chrome	28 504 832-00

Recommended miscellaneous

Concealed wall elbow - 35 085 970 90



mm [inches]



Flow rate chart



Codes & Standards

DIN 4109	ISO 3822	Scottish Water Byelaws	UK Water Supply Regulations
----------	----------	------------------------	-----------------------------

Ü-Zeichen



DORNBRACHT YARRE Shower head - Soft Black

DORNBRACHT
YARRE

28 504 832 Product version from 1/1/2023

Certificates and sustainability

LGA_28 WRAS_240202



Spare parts list

No.	Item Number	Name	Quantity used	Delivery time
1	90 27 83 016 00-69	rosette	1.00	2
2	90 11 03 011 10-69	connection	1.00	2