




28 648 626

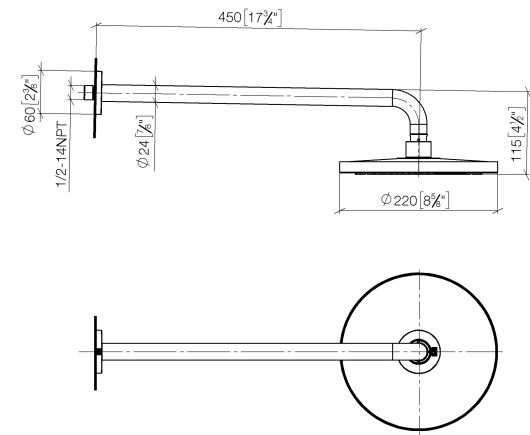


- 450mm projection
- rain flow
- with anti-scale system
- rain shower Ø 220 mm
- rosette Ø 60 mm
- 1/2" connection
- max. flow 7 l/min
- quick clearing
- This product can help a building meet the requirements of Green Building Rating Systems, e.g. LEED®, BREEAM®, DGNB

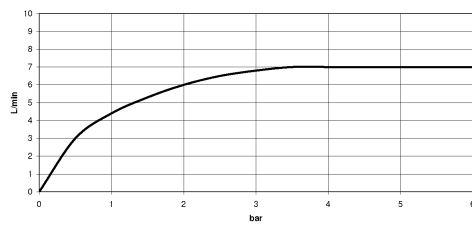
	Matte Black	28 648 626-33
	Chrome	28 648 626-00
	Brushed Chrome	28 648 626-93

28 648 626

mm [inches]



### Flow rate chart



### Codes & Standards

DIN 4109	ISO 3822	Ü-Zeichen
----------	----------	-----------



## EDITION PRO Rain shower with wall fixing FlowReduce 220 mm - Matte Black

---

EDITION PRO

28 648 626

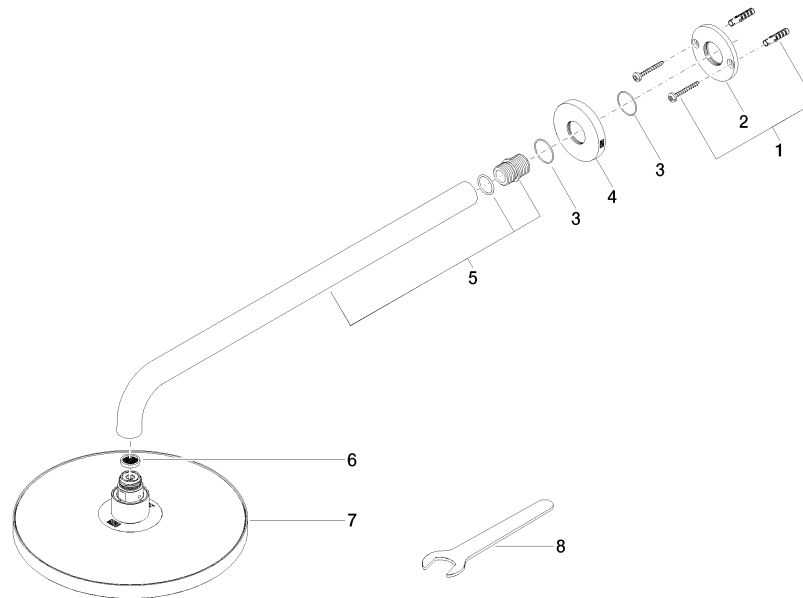
Certificates and sustainability

---

LGA\_38

28 648 626

Parts for other  
finishes can be found  
here: [Chrome](#)



## Spare parts list

No.	Item Number	Name	Quantity used	Delivery time
2	09 17 20 120 90	holder	1.00	2
7	90 12 05 092 20-33	shower	1.00	30
4	09 27 97 015-33	rosette	1.00	30
3	09 14 10 150 90	seal	2.00	2
8	90 30 09 069 00 90	key	1.00	2
6	09 23 01 075 90	insert	1.00	2
1	04 30 31 032 00 90	fixing set	1.00	2
5	90 11 03 070 00-33	pipe	1.00	30