















Rain shower with wall fixing 220 mm - Brushed Dark Brass

SERIES SPECIFIC

28 649 970 Product version from 3/13/2017



- 450mm projection
- rain shower Ø 220 mm
- PURE RAIN, max. flow rate 14 l/min (at 3 bar)
- Function from: 7 l/min
- rosette Ø 60 mm
- 1/2" connection
- with anti-scale system
- quick clearing
- WRAS

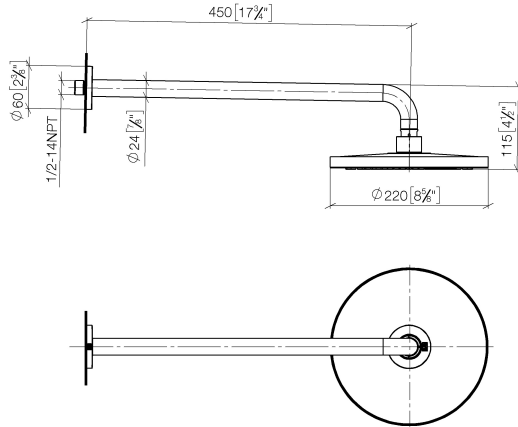
| | | |
|---|--------------------------------|---------------|
|  | Brushed Dark Brass | 28 649 970-39 |
|  | Chrome | 28 649 970-00 |
|  | Brushed Platinum | 28 649 970-06 |
|  | Platinum | 28 649 970-08 |
|  | Dark Chrome | 28 649 970-19 |
|  | Light Gold | 28 649 970-26 |
|  | Brushed Light Gold | 28 649 970-27 |
|  | Brushed Durabronze (23kt Gold) | 28 649 970-28 |
|  | Matte Black | 28 649 970-33 |
|  | Brushed Bronze | 28 649 970-42 |
|  | Brushed Champagne (22kt Gold) | 28 649 970-46 |
|  | Champagne (22kt Gold) | 28 649 970-47 |
|  | Brushed Chrome | 28 649 970-93 |
|  | Brushed Dark Platinum | 28 649 970-99 |

Rain shower with wall fixing 220 mm - Brushed Dark Brass

SERIES SPECIFIC

28 649 970 Product version from 3/13/2017

mm [inches]



Flow rate chart



Codes & Standards

DIN 4109

EN 1112

ISO 3822

Scottish Water
Byelaws

UK Water Supply
Regulations

Ü-Zeichen



Rain shower with wall fixing 220 mm - Brushed Dark Brass

SERIES SPECIFIC

28 649 970 Product version from 3/13/2017

Certificates and sustainability

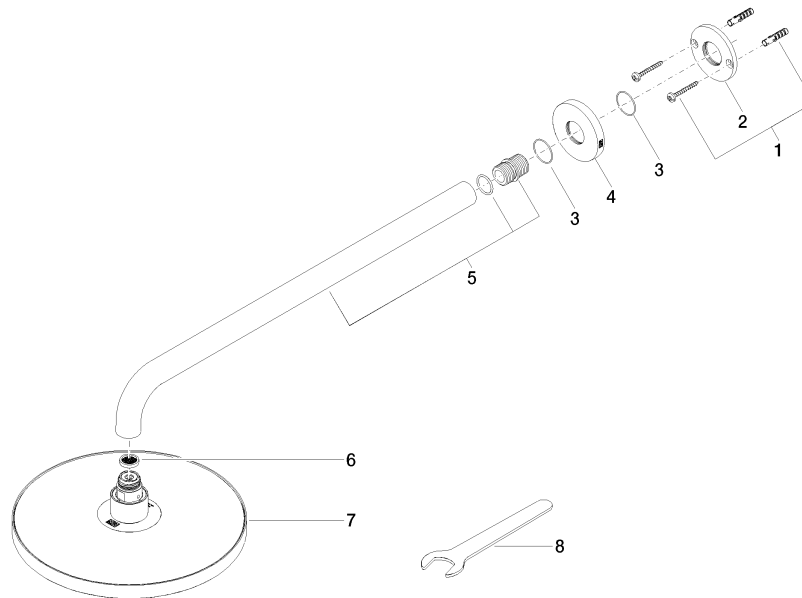
| | | |
|-----------|---------------------|--------|
| WRAS_2212 | DVGW_DW- 6517DN0 | LGA_38 |
|-----------|---------------------|--------|

Rain shower with wall fixing 220 mm - Brushed Dark Brass

SERIES SPECIFIC

28 649 970 Product version from 3/13/2017

Parts for other
finishes can be found
here: [Chrome](#)



Spare parts list

| No. | Item Number | Name | Quantity used | Delivery time |
|--|--------------------|------------|---------------|---------------|
| 7 | 04 12 05 092 00-39 | shower | 1.00 | - |
| Spare part can no longer be ordered, please order the replacement item | | | | |
| 4 | 09 27 97 015-39 | rosette | 1.00 | 60 |
| 1 | 04 30 31 032 00 90 | fixing set | 1.00 | 2 |
| 5 | 90 11 03 070 00-39 | pipe | 1.00 | 30 |
| 6 | 09 23 01 075 90 | insert | 1.00 | 2 |
| 8 | 90 30 09 069 00 90 | key | 1.00 | 2 |
| 2 | 09 17 20 120 90 | holder | 1.00 | 2 |
| 3 | 09 14 10 150 90 | seal | 2.00 | 2 |