

Rain shower with wall fixing 300 x 240 mm - Brushed Platinum

SERIES SPECIFIC

28 765 980

Product version from 3/13/2017



- 450mm projection
- rain shower 300 x 240mm
- PURE RAIN, max. flow rate 20 l/min (at 3 bar)
- Function from: 12 l/min
- rosette 60 x 60 mm
- 1/2" connection
- with anti-scale system
- quick clearing
- WRAS

Product change as of 1st April 2024: max. flow

20l/min

	Brushed Platinum	28 765 980-06
	Chrome	28 765 980-00
	Platinum	28 765 980-08
	Brushed Light Gold	28 765 980-27
	Brushed Durabronze (23kt Gold)	28 765 980-28
	Matte Black	28 765 980-33
	Brushed Chrome	28 765 980-93
	Brushed Dark Platinum	28 765 980-99

Recommended miscellaneous



- Concealed wall elbow -

•max. recess depth 163 mm

•min. recess depth 90 mm

35 085 970 90

## Rain shower with wall fixing 300 x 240 mm - Brushed Platinum

SERIES SPECIFIC

28 765 980 Product version from 3/13/2017

mm [inches]



### Flow rate chart



### Codes & Standards

DIN 4109

ISO 3822

Scottish Water  
Byelaws

UK Water Supply  
Regulations

Ü-Zeichen



Rain shower with wall fixing 300 x 240 mm - Brushed Platinum

SERIES SPECIFIC

---

28 765 980    Product version from 3/13/2017

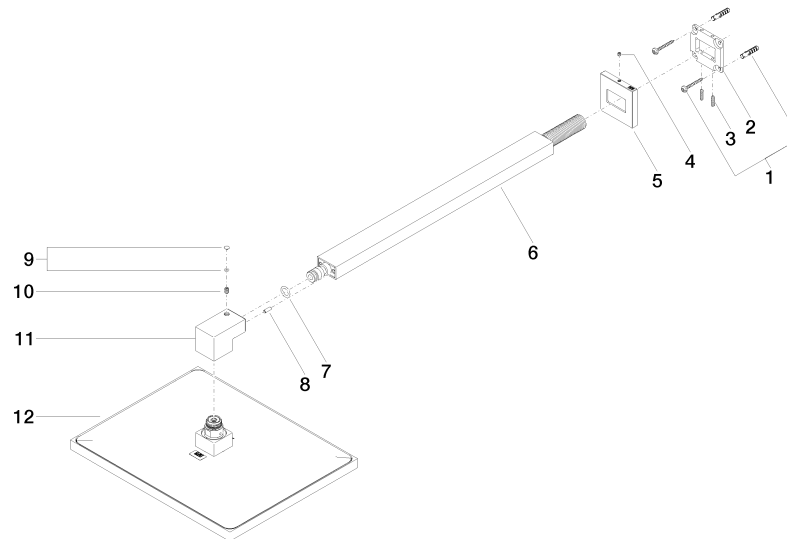
Certificates and sustainability

---

LGA\_29

WRAS\_2212

LGA\_38



## Spare parts list

No.	Item Number	Name	Quantity used	Delivery time
10	09 31 11 036 90	pin	1.00	2
2	09 30 11 160 90	disc	1.00	2
11	09 17 01 180-06	connection	1.00	10
1	04 30 31 032 00 90	fixing set	1.00	2
12	04 12 05 063 00-06	shower	1.00	10
6	04 28 22 247 20-06	pipe	1.00	10
5	09 27 98 016-06	rosette	1.00	10
4	09 31 11 099 90	pin	1.00	2
8	09 31 11 040 90	pin	1.00	2
9	90 31 20 087 00-06	plug	1.00	10
3	09 31 11 084 90	pin	2.00	2
7	90 14 10 011 00 90	seal	1.00	2