

ELIO Two-hole mixer with individual rosettes - Brushed Chrome


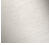

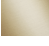
ELIO

32 800 790



- 235mm projection
- pivotable spout 360°
- spout, end-piece with 20° rotation
- air-enriched flow
- height of mixer 337 mm
- height up to aerator 297 mm
- individual rosettes Ø 55mm
- hole diameter spout 35 mm
- single-lever mixer hole diameter 35 mm
- max. flow 8 l/min at 3 bar flow pressure
- lead-free
- This product can help a building meet the requirements of Green Building Rating Systems, e.g. LEED®, BREEAM®, DGNB
- WRAS 2107024

Operating unit can be positioned freely.

| | | |
|--|--------------------------------|---------------|
|  | Brushed Chrome | 32 800 790-93 |
|  | Chrome | 32 800 790-00 |
|  | Brushed Platinum | 32 800 790-06 |
|  | Platinum | 32 800 790-08 |
|  | Dark Chrome | 32 800 790-19 |
|  | Brushed Durabronze (23kt Gold) | 32 800 790-28 |
|  | Brushed Champagne (22kt Gold) | 32 800 790-46 |
|  | Champagne (22kt Gold) | 32 800 790-47 |
|  | Brushed Dark Platinum | 32 800 790-99 |

Recommended miscellaneous

Strainer waste with control handle - Brushed Chrome 10 710 970-93

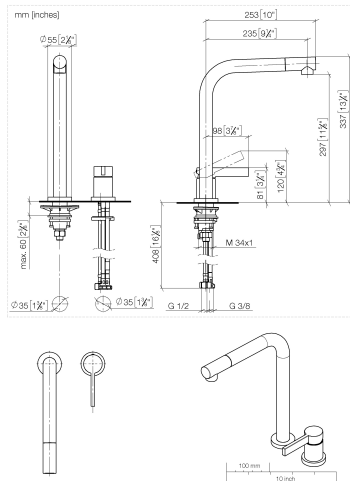


Recommended miscellaneous

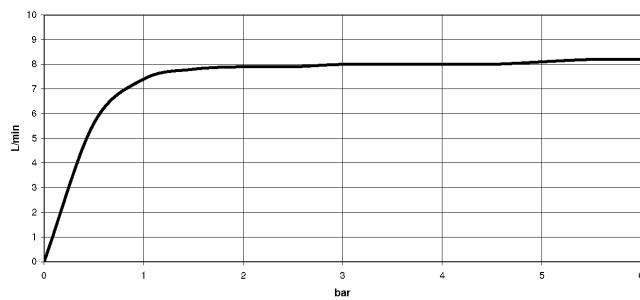
Dispenser with rosette - Brushed Chrome 82 444 970-93



32 800 790



Flow rate chart



Codes & Standards

EN 817

VA-Zeichen



ELIO Two-hole mixer with individual rosettes - Brushed Chrome

ELIO

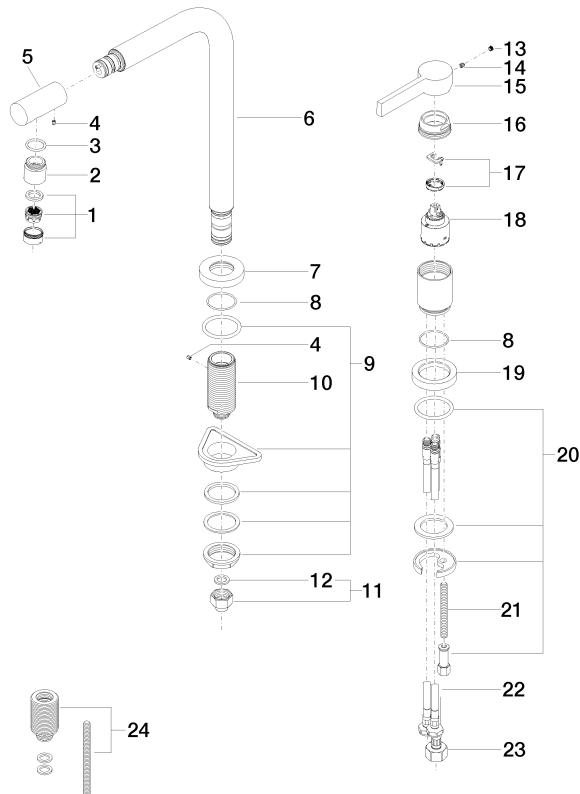
32 800 790

Certificates

ETA_18

Product version from 6/1/2022

Parts for other
finishes can be found
here: [Chrome](#)





ELIO Two-hole mixer with individual rosettes - Brushed Chrome

ELIO

32 800 790

Spare parts list

Product version from 6/1/2022