

## META Single-lever bath mixer for wall mounting without shower set - Chrome

META

33 200 660 Product version from 7/1/2023



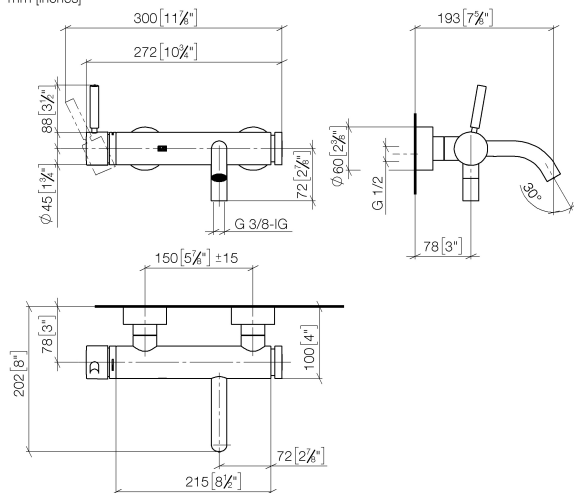
- 202mm projection
- circular normal flow
- automatic bath/shower diverter
- 3/8" shower outlet
- slide-on rosettes Ø 60 mm
- 1/2" connection
- gauge 150 mm - 15 mm
- max. flow 14 l/min at 3 bar flow pressure
- WRAS

Intrinsic protection against back flow.

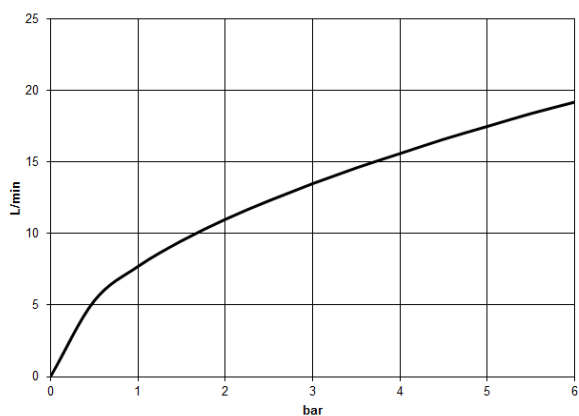
	Chrome	33 200 660-00
	Brushed Platinum	33 200 660-06
	Dark Chrome	33 200 660-19
	Light Gold	33 200 660-26
	Brushed Light Gold	33 200 660-27
	Matte Black	33 200 660-33
	Brushed Bronze	33 200 660-42
	Brushed Champagne (22kt Gold)	33 200 660-46
	Champagne (22kt Gold)	33 200 660-47
	Brushed Chrome	33 200 660-93
	Brushed Dark Platinum	33 200 660-99

33 200 660 Product version from 7/1/2023

mm [inches]



### Flow rate chart



### Codes & Standards

DIN 4109

EN 1717

ISO 3822

Scottish Water  
Byelaws

UK Water Supply  
Regulations

Ü-Zeichen



## META Single-lever bath mixer for wall mounting without shower set - Chrome

META

33 200 660 Product version from 7/1/2023

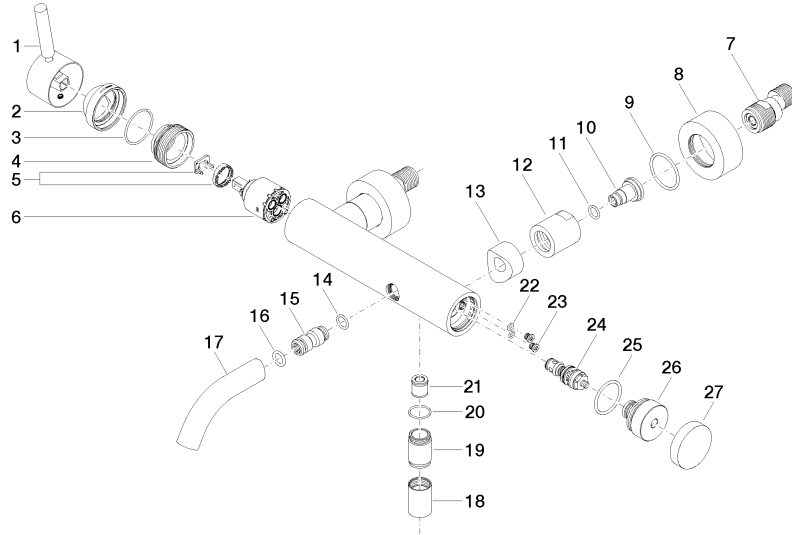
### Certificates and sustainability

Belgaqua\_21-025-2 LGA\_29

WRAS\_2207

33 200 660 Product version from 7/1/2023

Parts for other  
finishes can be found  
here: Brushed  
Platinum





## META Single-lever bath mixer for wall mounting without shower set - Chrome

META

33 200 660 Product version from 7/1/2023

### Spare parts list

No.	Item Number	Name	Quantity used	Delivery time
12	09 23 10 048-00	nut	2.00	10
26	09 21 10 035 20-00	nipple	1.00	10
9	09 14 10 119 90	seal	2.00	2
6	90 15 05 064 00 90	cartridge	1.00	2
3	09 14 10 102 90	seal	1.00	2
13	09 18 40 059-00	sleeve	2.00	10
1	90 20 66 007 00-00	handle	1.00	10
7	04 11 04 030 00 90	connection	2.00	2
8	09 27 62 004-00	rosette	2.00	10
2	09 28 30 032-00	cover	1.00	10
14	09 14 10 003 90	seal	1.00	2
27	09 20 62 031-00	handle	1.00	10
11	09 14 10 008 90	seal	2.00	2
22	09 14 10 001 90	seal	2.00	2
23	09 30 30 113 20 90	screw	2.00	2
24	90 31 09 032 00-00	diverter	1.00	10
15	09 24 04 043 90	nipple	1.00	2
25	09 14 10 101 90	seal	1.00	2
19	09 24 03 115 20-00	nipple	1.00	10
4	09 24 04 296 90	nut	1.00	2
17	90 11 06 213 00-00	spout	1.00	10
20	90 14 10 032 00 90	seal	1.00	2
18	90 21 02 069 00-00	cover	1.00	10
10	09 29 05 005 20 90	nipple	2.00	60
21	90 23 01 141 00 90	back-flow preventer	1.00	2
16	90 14 10 011 00 90	seal	1.00	2
5	90 28 10 148 00 90	accessories	1.00	2