

## META Single-lever bath mixer for wall mounting without shower set - Brushed Light Gold

META

33 200 660 Product version from 7/1/2023



- 202mm projection
- circular normal flow
- automatic bath/shower diverter
- 3/8" shower outlet
- slide-on rosettes Ø 60 mm
- 1/2" connection
- gauge 150 mm - 15 mm
- max. flow 14 l/min at 3 bar flow pressure
- WRAS

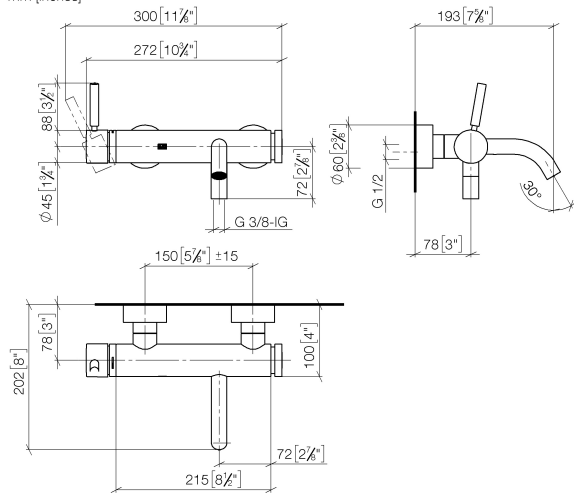
Intrinsic protection against back flow.

|   |                               |               |
|---|-------------------------------|---------------|
|    | Brushed Light Gold            | 33 200 660-27 |
|    | Chrome                        | 33 200 660-00 |
|    | Brushed Platinum              | 33 200 660-06 |
|    | Dark Chrome                   | 33 200 660-19 |
|    | Light Gold                    | 33 200 660-26 |
|    | Matte Black                   | 33 200 660-33 |
|    | Brushed Dark Brass            | 33 200 660-39 |
|    | Brushed Bronze                | 33 200 660-42 |
|    | Brushed Champagne (22kt Gold) | 33 200 660-46 |
|   | Champagne (22kt Gold)         | 33 200 660-47 |
|  | Brushed Chrome                | 33 200 660-93 |
|  | Brushed Dark Platinum         | 33 200 660-99 |

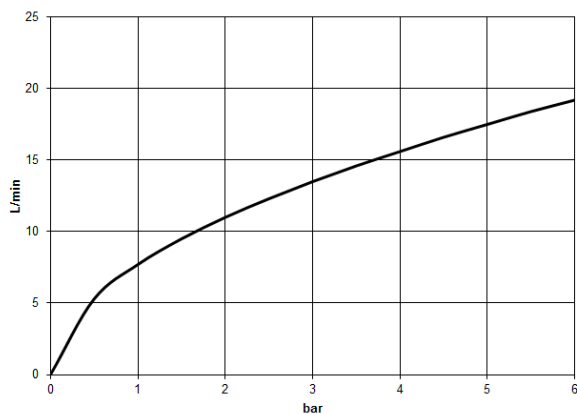
META Single-lever bath mixer for wall mounting without shower set - Brushed Light Gold

## META

33 200 660      Product version from 7/1/2023  
mm [inches]



Flow rate chart



## Codes & Standards

DIN 4109

ISO 3822

Ü-Zeichen



## META Single-lever bath mixer for wall mounting without shower set - Brushed Light Gold

---

META

33 200 660 Product version from 7/1/2023

Certificates and sustainability

---

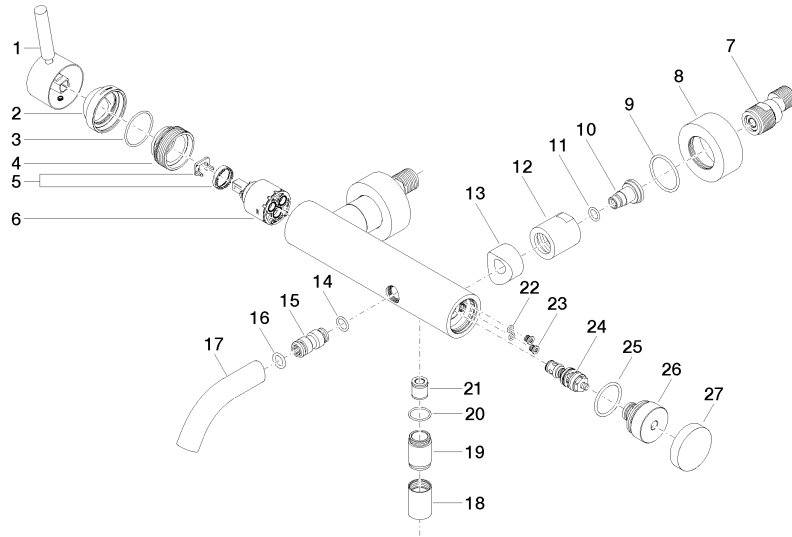
LGA\_29

# META Single-lever bath mixer for wall mounting without shower set - Brushed Light Gold

META

33 200 660 Product version from 7/1/2023

Parts for other  
finishes can be found  
here: [Chrome](#)





## META Single-lever bath mixer for wall mounting without shower set - Brushed Light Gold

META

33 200 660 Product version from 7/1/2023

### Spare parts list

| No. | Item Number        | Name                | Quantity used | Delivery time |
|-----|--------------------|---------------------|---------------|---------------|
| 5   | 90 28 10 148 00 90 | accessories         | 1.00          | 2             |
| 4   | 09 24 04 296 90    | nut                 | 1.00          | 2             |
| 16  | 90 14 10 011 00 90 | seal                | 1.00          | 2             |
| 15  | 09 24 04 043 90    | nipple              | 1.00          | 2             |
| 13  | 09 18 40 059-27    | sleeve              | 2.00          | 60            |
| 18  | 90 21 02 069 00-27 | cover               | 1.00          | 20            |
| 19  | 09 24 03 115 20-27 | nipple              | 1.00          | 60            |
| 25  | 09 14 10 101 90    | seal                | 1.00          | 2             |
| 12  | 09 23 10 048-27    | nut                 | 2.00          | 60            |
| 27  | 09 20 62 031-27    | handle              | 1.00          | 60            |
| 26  | 09 21 10 035 20-27 | nipple              | 1.00          | 60            |
| 3   | 09 14 10 102 90    | seal                | 1.00          | 2             |
| 24  | 90 31 09 032 00-27 | diverter            | 1.00          | 20            |
| 21  | 90 23 01 141 00 90 | back-flow preventer | 1.00          | 2             |
| 17  | 90 11 06 213 00-27 | spout               | 1.00          | 20            |
| 9   | 09 14 10 119 90    | seal                | 2.00          | 2             |
| 6   | 90 15 05 064 00 90 | cartridge           | 1.00          | 2             |
| 2   | 09 28 30 032-27    | cover               | 1.00          | 60            |
| 10  | 09 29 05 005 20 90 | nipple              | 2.00          | 60            |
| 22  | 09 14 10 001 90    | seal                | 2.00          | 2             |
| 11  | 09 14 10 008 90    | seal                | 2.00          | 2             |
| 1   | 90 20 66 007 00-27 | handle              | 1.00          | 20            |
| 23  | 09 30 30 113 20 90 | screw               | 2.00          | 2             |
| 8   | 09 27 62 004-27    | rosette             | 2.00          | 60            |
| 14  | 09 14 10 003 90    | seal                | 1.00          | 2             |
| 7   | 04 11 04 030 00 90 | connection          | 2.00          | 2             |
| 20  | 90 14 10 032 00 90 | seal                | 1.00          | 2             |